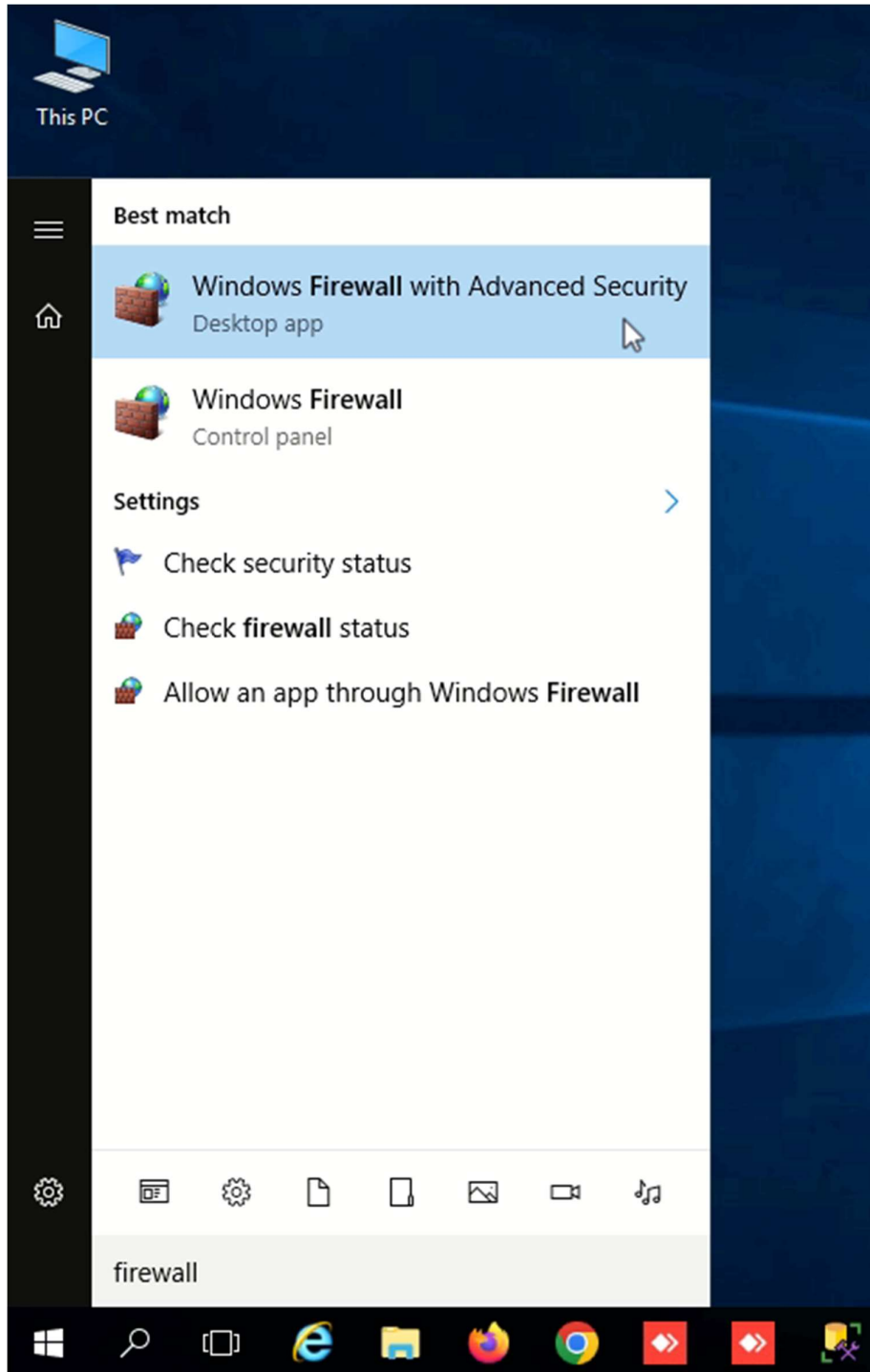
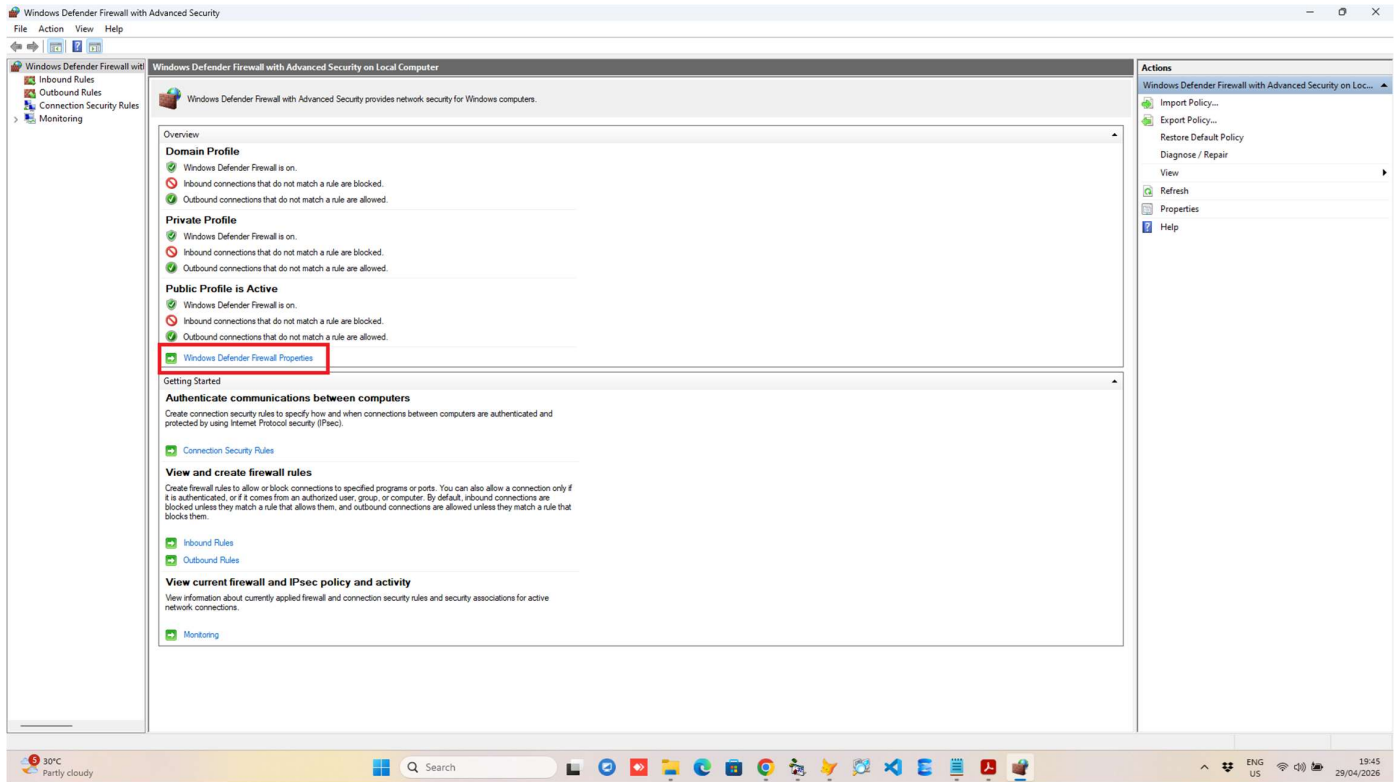
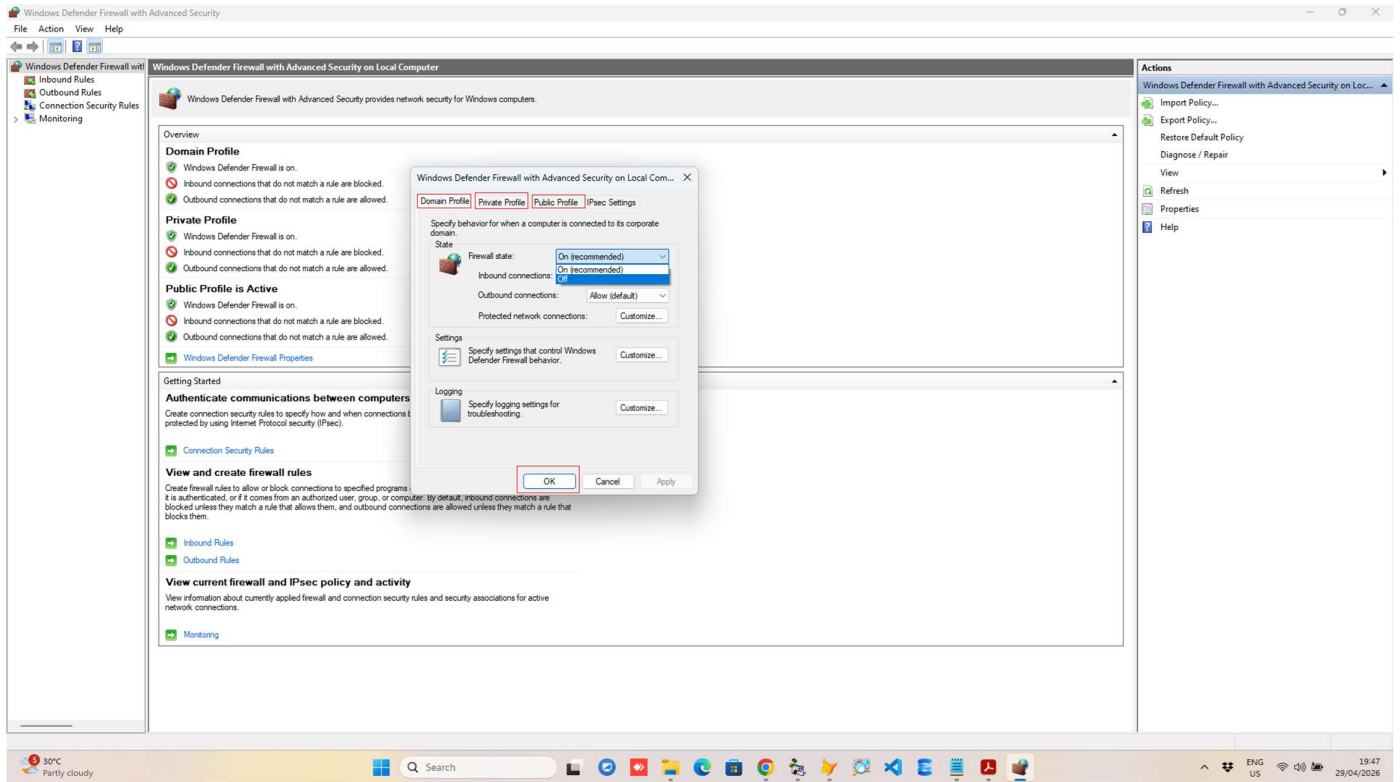
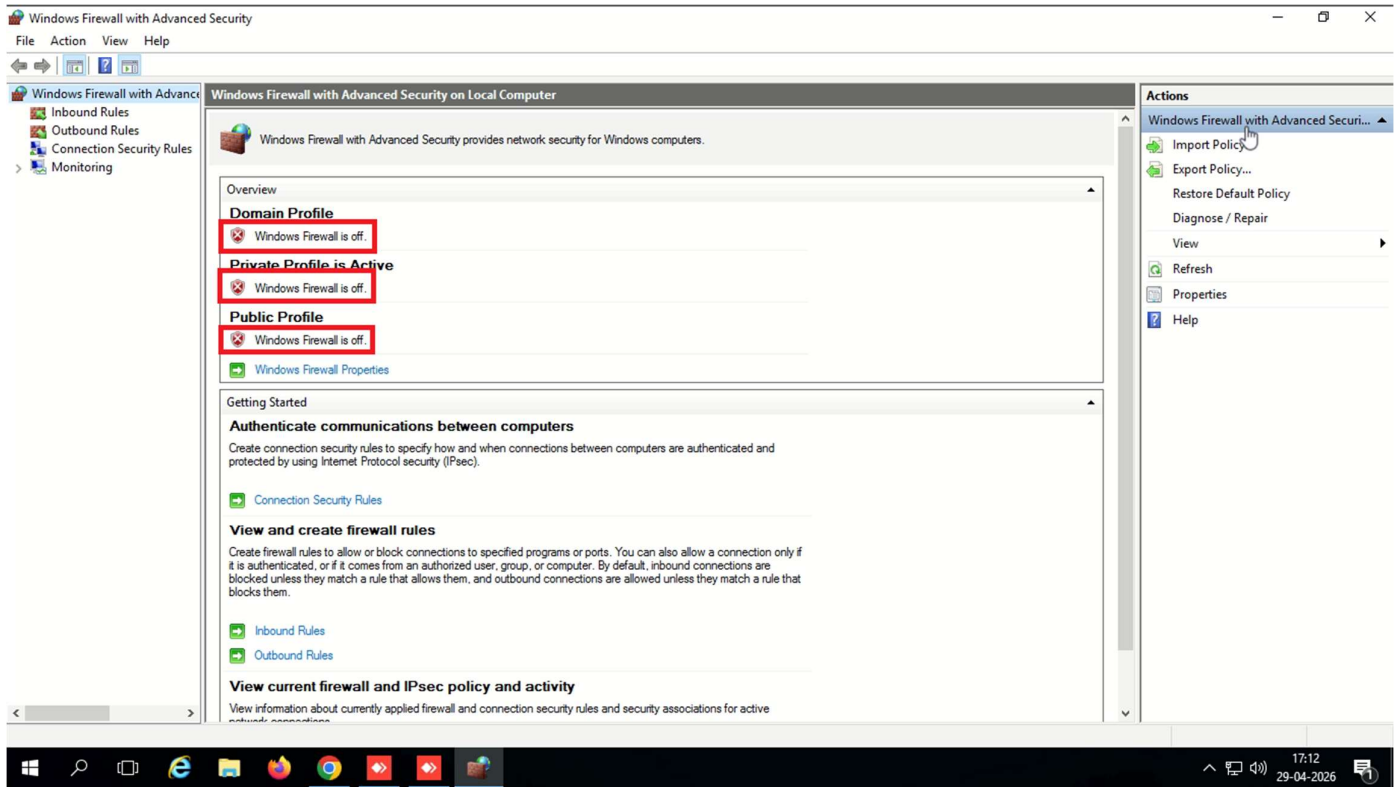


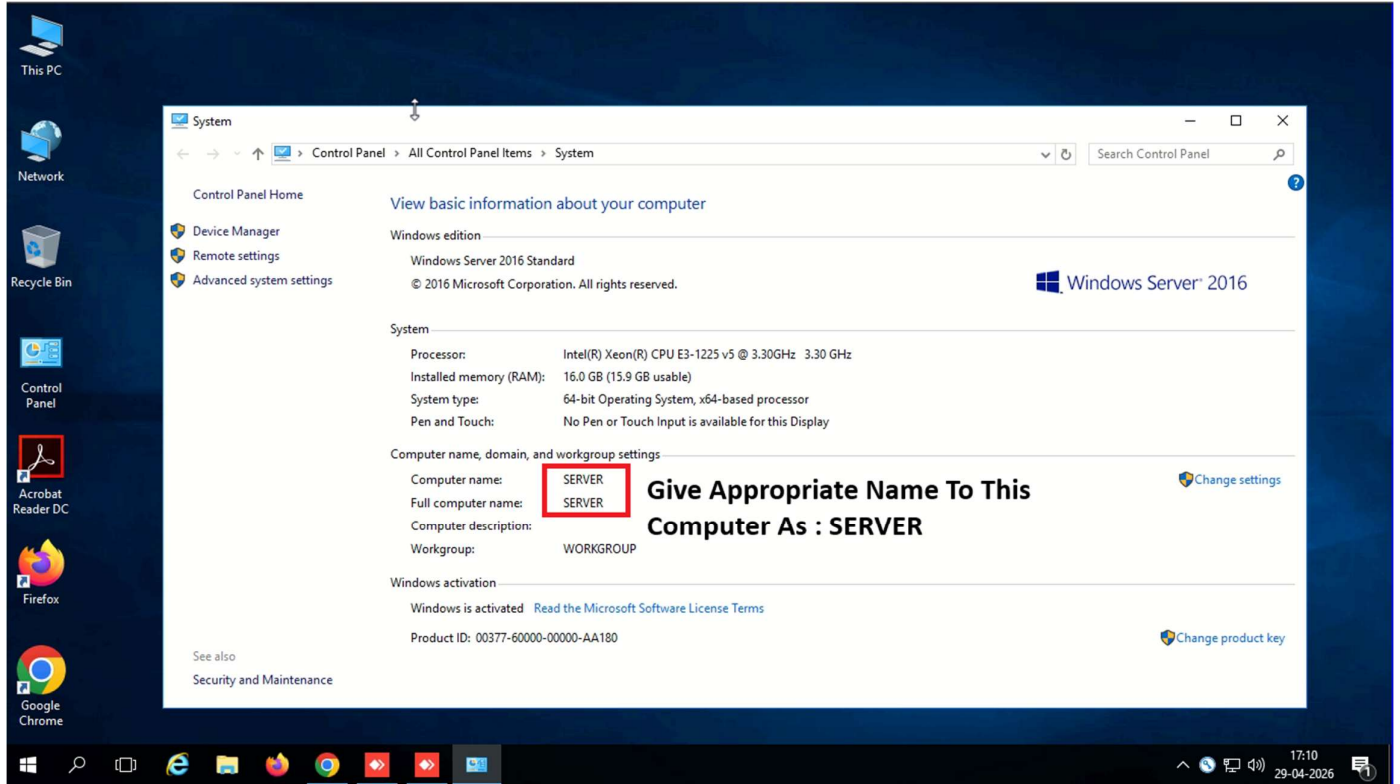
**Give Appropriate Manual IP Address / Subnet Mask To The NIC**

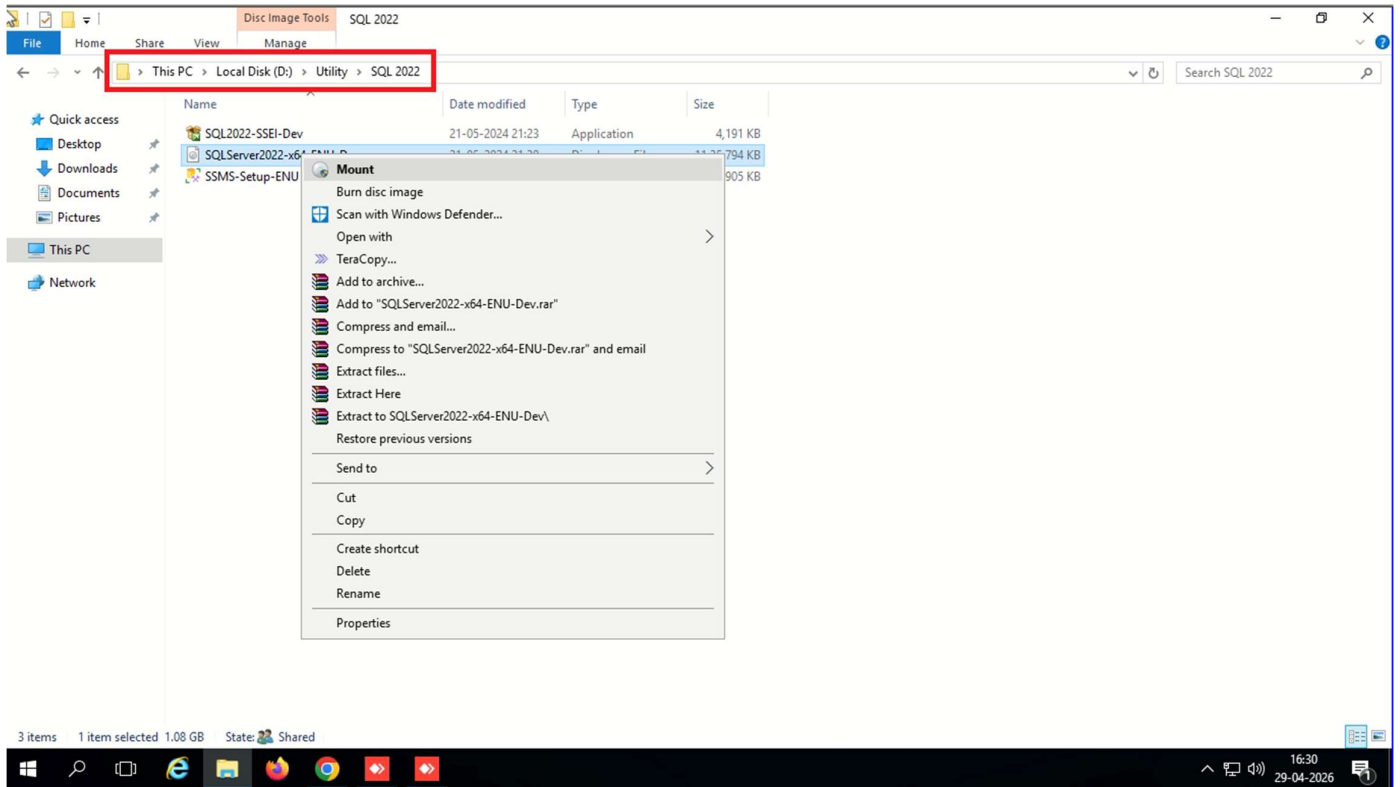


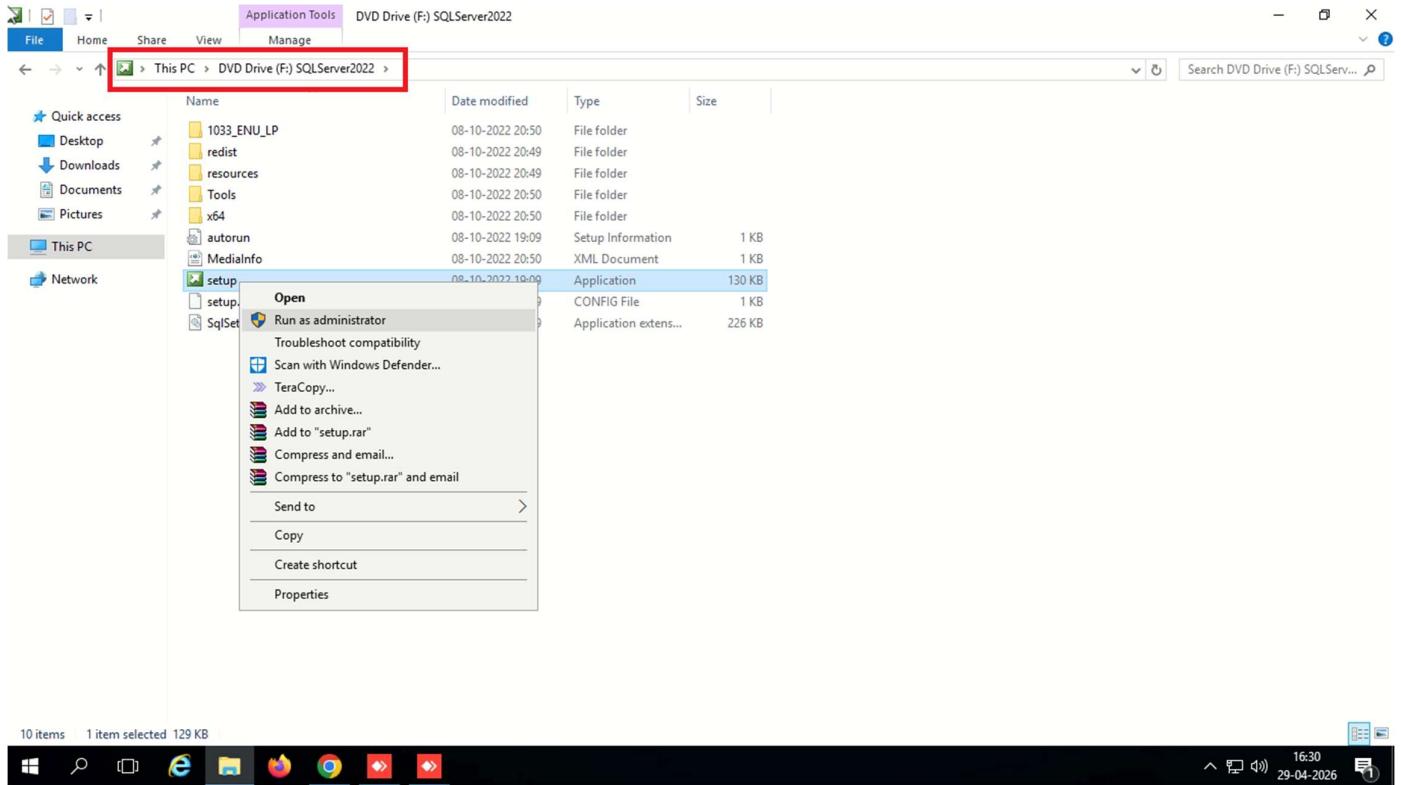


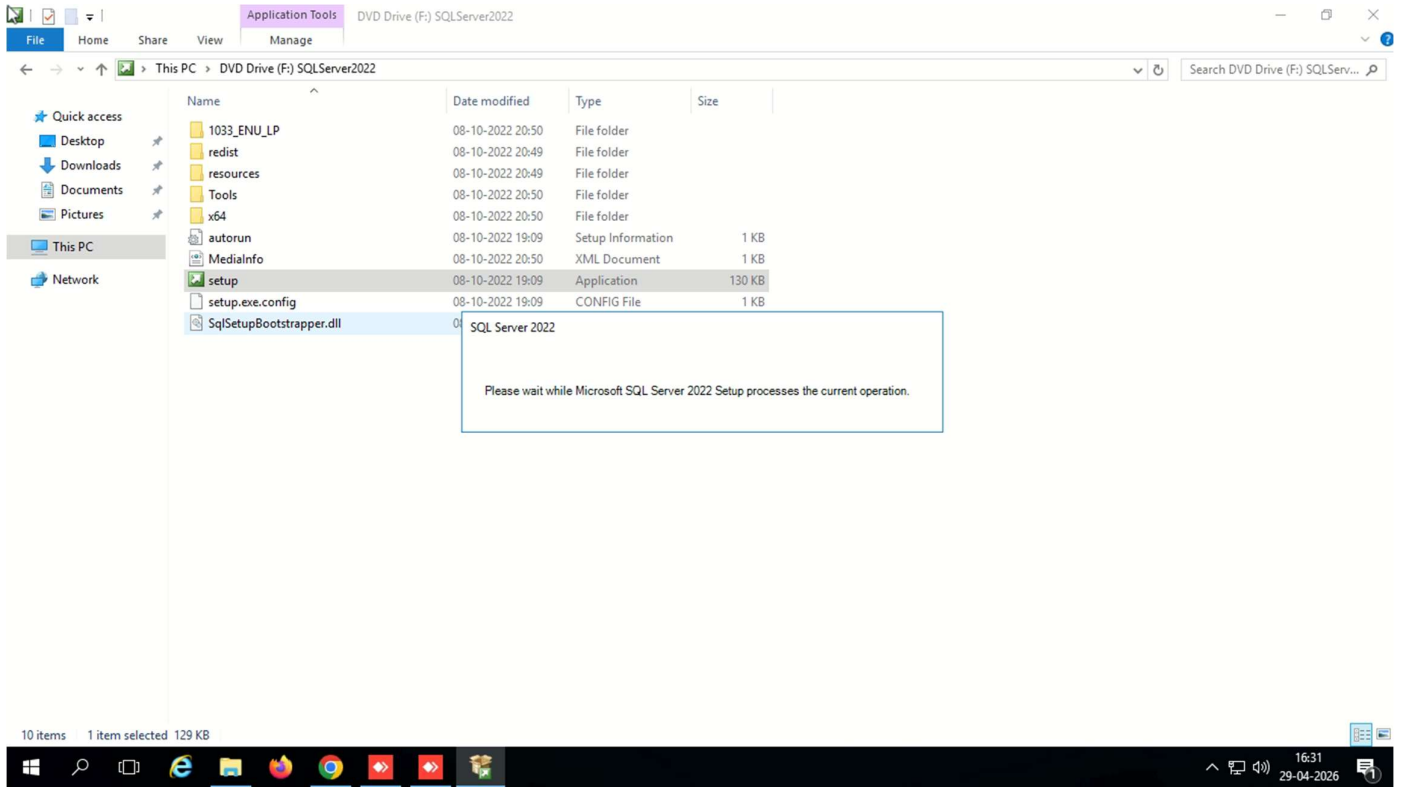


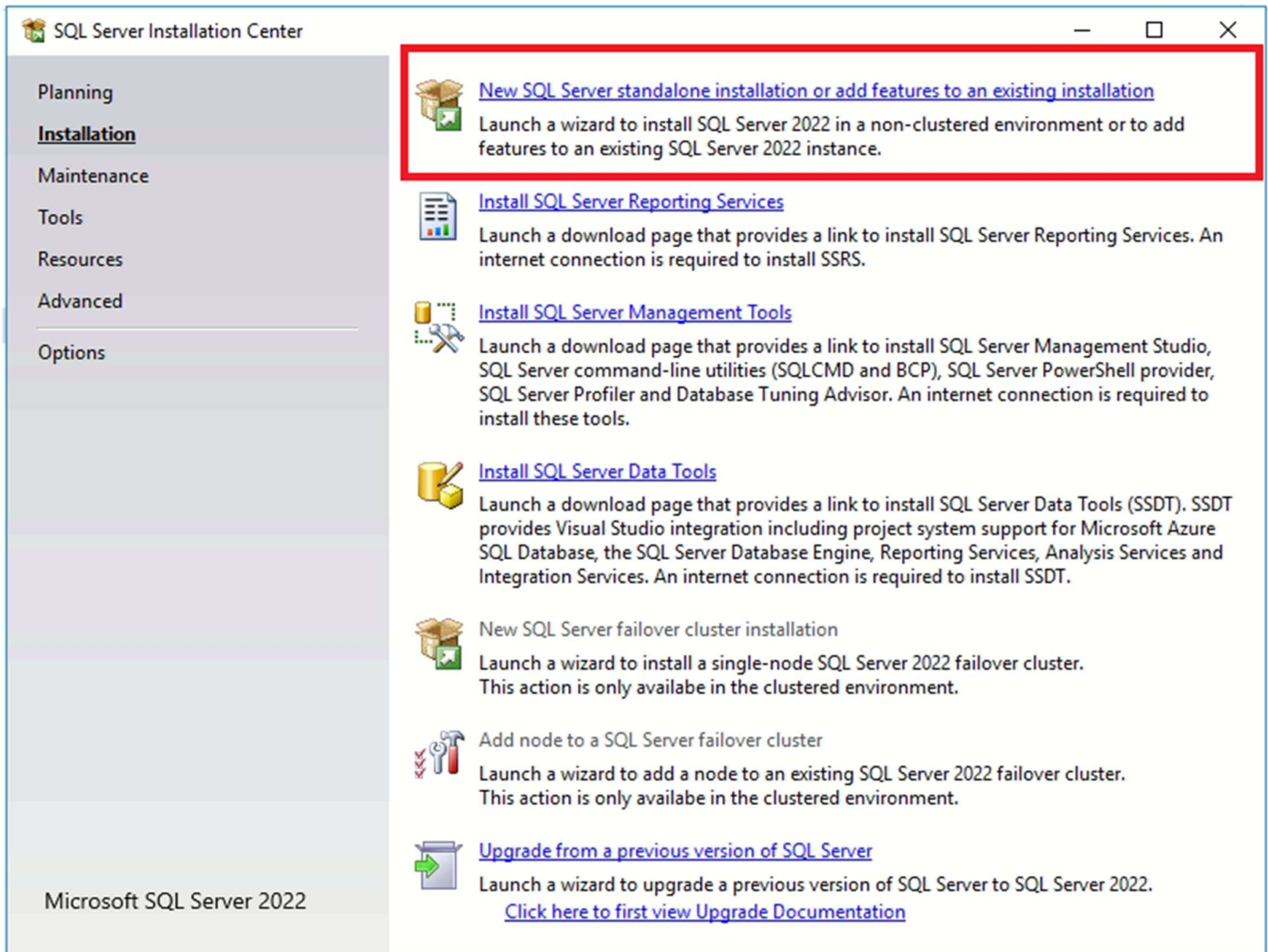















SQL Server Installation Center


Planning  
**Installation**  
 Maintenance  
 Tools  
 Resources  
 Advanced  
 Options


Microsoft SQL Server 2022


 [New SQL Server standalone installation or add features to an existing installation](#)  
 Launch a wizard to install SQL Server 2022 in a non-clustered environment or to add features to an existing SQL Server 2022 instance.


 [Install SQL Server Reporting Services](#)  
 Launch a download page that provides a link to install SQL Server Reporting Services. An internet connection is required to install SSRS.

 [Install SQL Server Management Tools](#)  
 Launch a download page that provides a link to install SQL Server Management Studio, SQL Server command-line utilities (SQLCMD and BCP), SQL Server PowerShell provider, SQL Server Profiler and Database Tuning Advisor. An internet connection is required to install these tools.

 [Install SQL Server Data Tools](#)  
 Launch a download page that provides a link to install SQL Server Data Tools (SSDT). SSDT provides Visual Studio integration including project system support for Microsoft Azure SQL Database, the SQL Server Database Engine, Reporting Services, Analysis Services and Integration Services. An internet connection is required to install SSDT.

 New SQL Server failover cluster installation  
 Launch a wizard to install a single-node SQL Server 2022 failover cluster. This action is only available in the clustered environment.

 Add node to a SQL Server failover cluster  
 Launch a wizard to add a node to an existing SQL Server 2022 failover cluster. This action is only available in the clustered environment.

 [Upgrade from a previous version of SQL Server](#)  
 Launch a wizard to upgrade a previous version of SQL Server to SQL Server 2022. [Click here to first view Upgrade Documentation](#)

SQL Server Installation Center

- Planning
- Installation**
- Maintenance
- Tools
- Resources
- Advanced
- Options

SQL Server 2022

Please wait while Microsoft SQL Server 2022 Setup processes the current operation.

- New SQL Server standalone installation or add features to an existing installation  
Launch a wizard to install SQL Server 2022 in a non-clustered environment or to add features to an existing SQL Server 2022 instance.
- [Install SQL Server Reporting Services](#)  
Launch a download page that provides a link to install SQL Server Reporting Services. An internet connection is required to install SSRS.
- [Install SQL Server Management Tools](#)  
Launch a download page that provides a link to install SQL Server Management Studio, SQL Server command-line utilities (SQLCMD and BCP), SQL Server PowerShell provider, and SQL Server Data Tools (SSDT). SSDT system support for Microsoft Azure Reporting Services, Analysis Services and Integration Services. An internet connection is required to install SSDT.
- New SQL Server failover cluster installation  
Launch a wizard to install a single-node SQL Server 2022 failover cluster. This action is only available in the clustered environment.
- Add node to a SQL Server failover cluster  
Launch a wizard to add a node to an existing SQL Server 2022 failover cluster. This action is only available in the clustered environment.
- Upgrade from a previous version of SQL Server  
Launch a wizard to upgrade a previous version of SQL Server to SQL Server 2022. [Click here to first view Upgrade Documentation](#)

Microsoft SQL Server 2022

**Edition**

Select the edition of SQL Server 2022 you want to install.

**Edition**

- License Terms
- Global Rules
- Microsoft Update
- Product Updates
- Install Setup Files
- Install Rules
- Azure Extension for SQL Server
- Feature Selection
- Feature Rules
- Feature Configuration Rules
- Ready to Install
- Installation Progress
- Complete

Select an edition of SQL Server to install. You can choose to either use a SQL Server license that you have already purchased by entering the product key or choose pay-as-you-go billing through Microsoft Azure. You can also specify a free edition of SQL Server: Developer, Evaluation, or Express. Evaluation has the largest set of SQL Server features, as documented in SQL Server Books Online, and is activated with a 180-day expiration. Developer edition does not have an expiration, has the same set of features found in Evaluation, but is licensed for non-production database application development only. To upgrade from one installed edition to another, run the Edition Upgrade Wizard.

Specify a free edition:

Developer

Use pay-as-you-go billing through Microsoft Azure:

Warning: To enable this option, you must have an active Azure subscription that you will be required to provide along with a resource group, Azure region, and tenant ID later in setup. For more information, see <https://aka.ms/ArcEnabledSqlPAYG>.

Standard

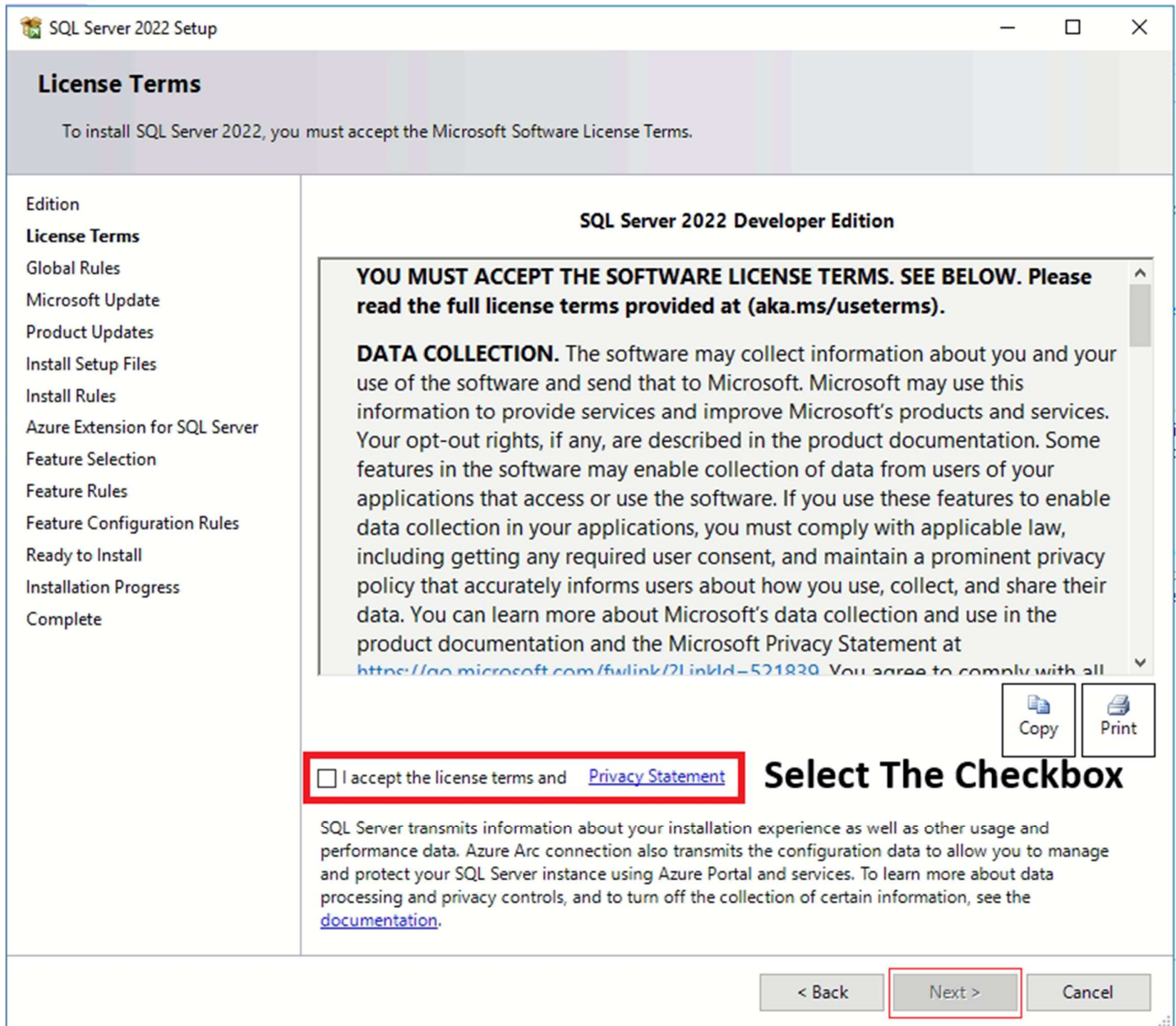
Enter the product key:

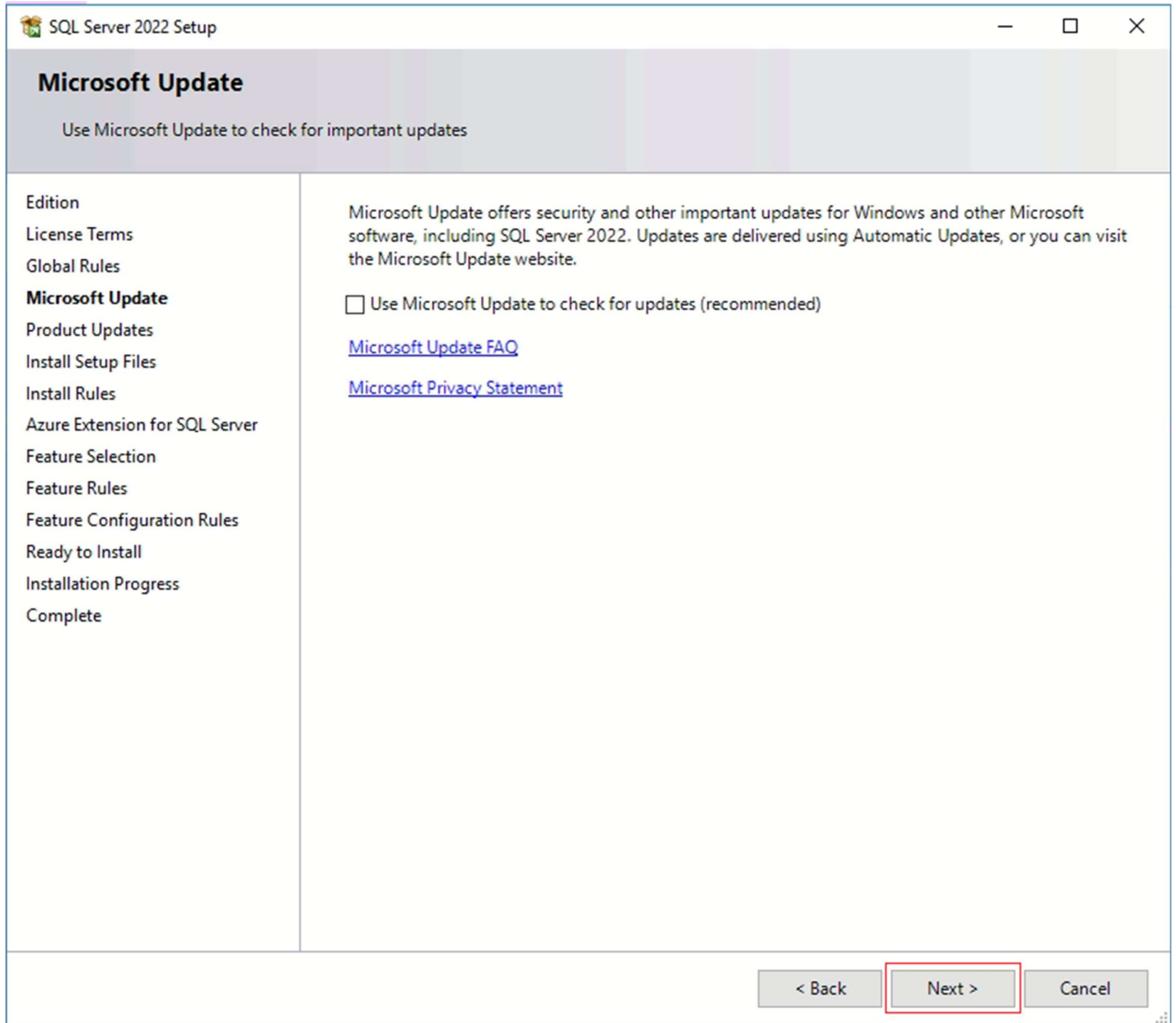
- - - -

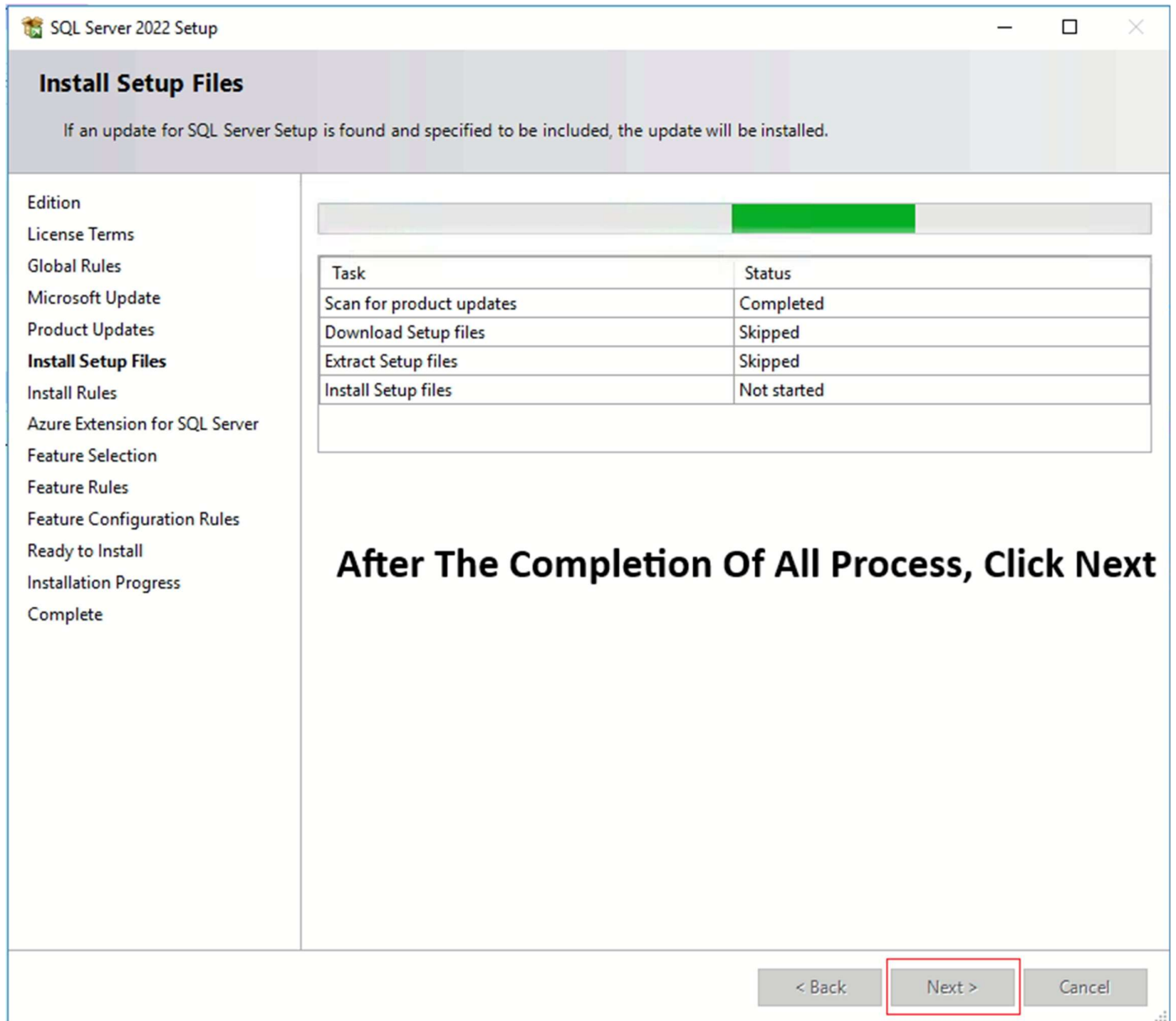
I have a SQL Server license with Software Assurance or SQL Software Subscription

I have a SQL Server license only

< Back   **Next >**   Cancel







**SQL Server 2022 Setup**

## Install Setup Files

If an update for SQL Server Setup is found and specified to be included, the update will be installed.

Edition  
License Terms  
Global Rules  
Microsoft Update  
Product Updates  
**Install Setup Files**  
Install Rules  
Azure Extension for SQL Server  
Feature Selection  
Feature Rules  
Feature Configuration Rules  
Ready to Install  
Installation Progress  
Complete

Task	Status
Scan for product updates	Completed
Download Setup files	Skipped
Extract Setup files	Skipped
Install Setup files	Not started

**After The Completion Of All Process, Click Next**

< Back   **Next >**   Cancel

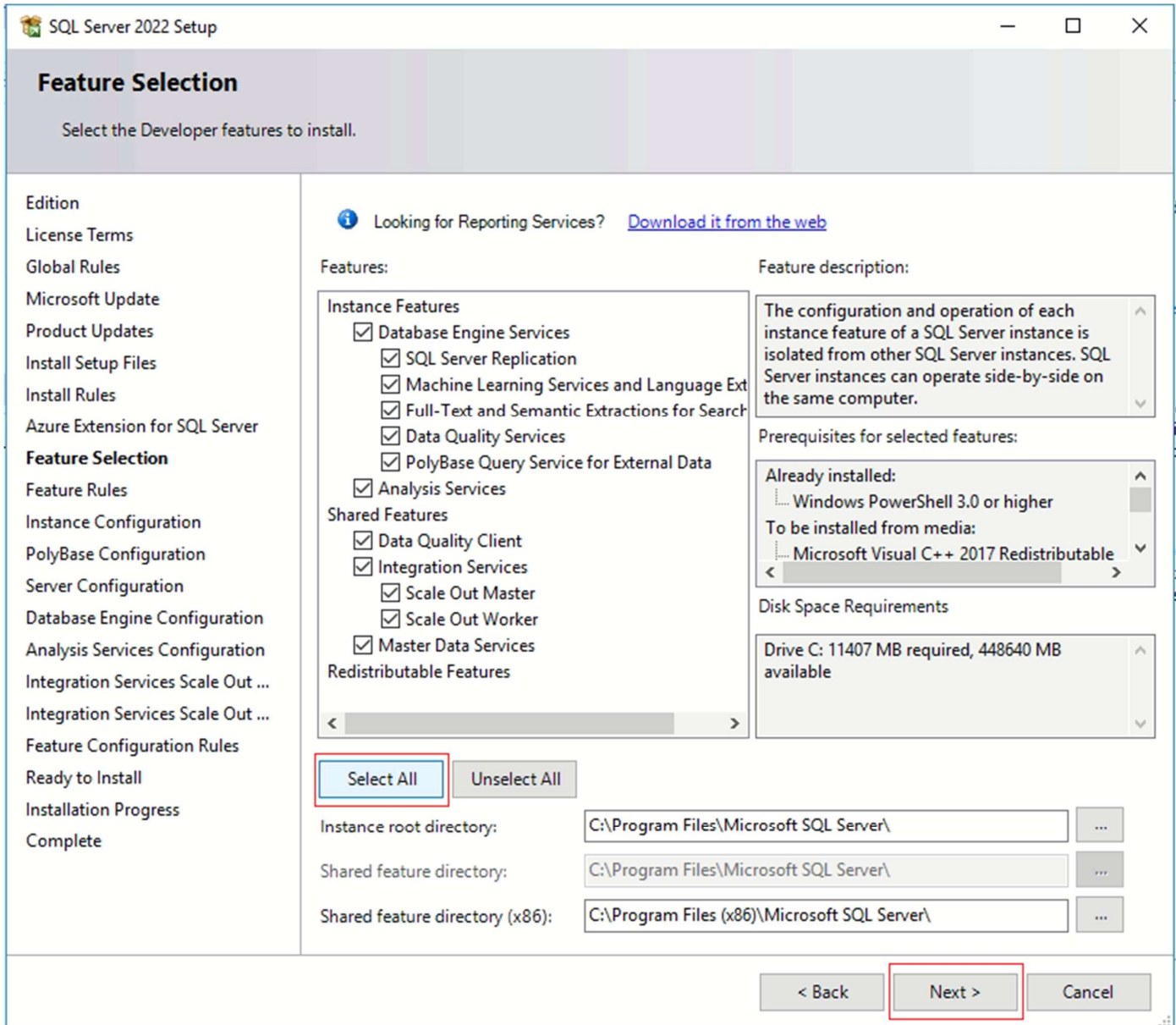
The screenshot shows the 'Azure Extension for SQL Server' step in the SQL Server 2022 Setup wizard. The window title is 'SQL Server 2022 Setup'. The main heading is 'Azure Extension for SQL Server'. Below the heading, a message states: 'Azure Extension for SQL Server is required to enable Microsoft Defender for Cloud, Purview, and Azure Active Directory.'

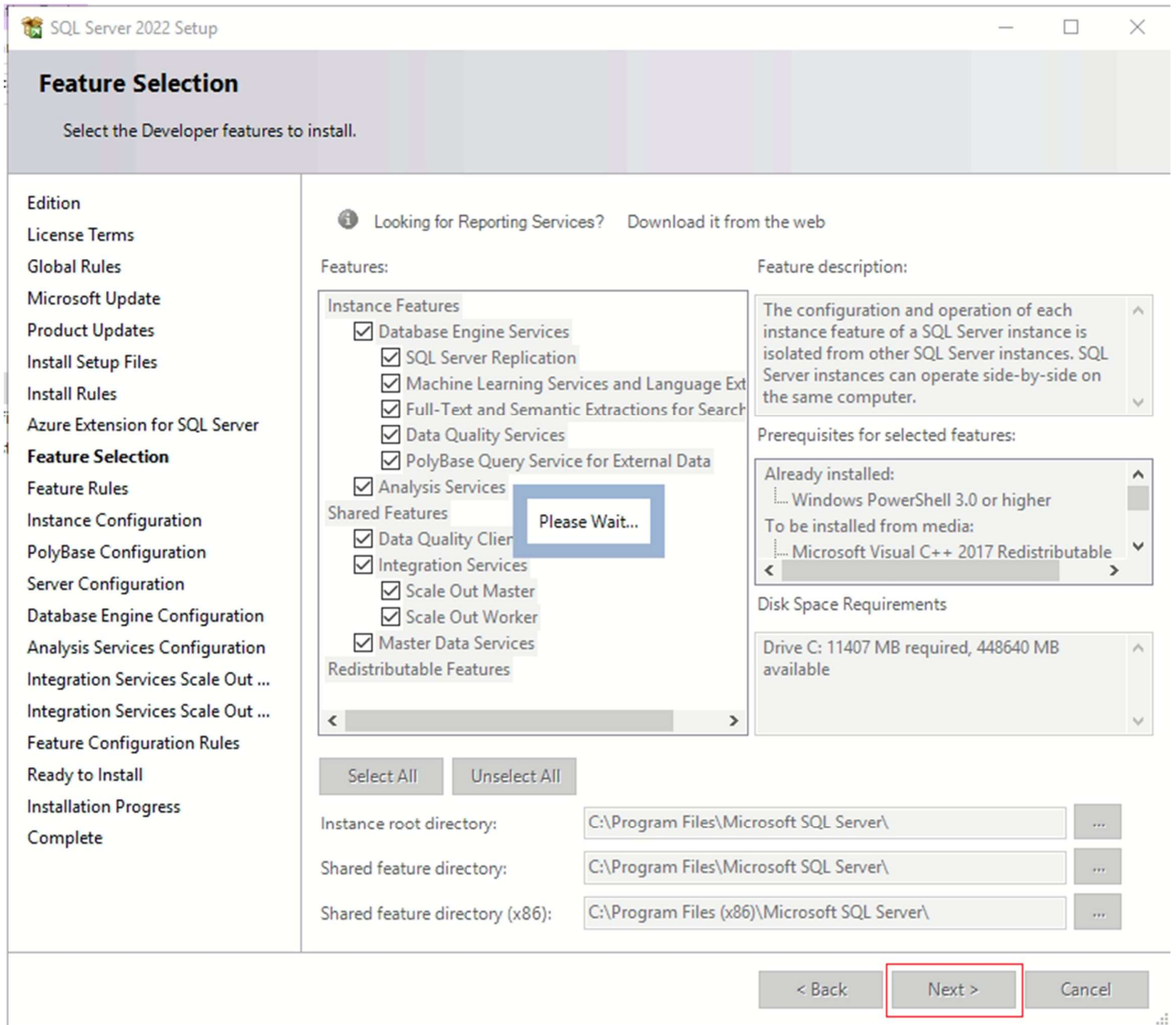
On the left, a navigation pane lists the following steps: Edition, License Terms, Global Rules, Microsoft Update, Product Updates, Install Setup Files, Install Rules, **Azure Extension for SQL Serv...**, Feature Selection, Feature Rules, Feature Configuration Rules, Ready to Install, Installation Progress, and Complete.

The main content area contains the following options and fields:

- Azure Extension for SQL Server. To install Azure extension for SQL Server, provide your Azure account or a service principal to authenticate the SQL Server instance to Azure. You also need to provide the Subscription ID, Resource Group, Region, and Tenant ID where this instance will be registered. For more information for each parameter, visit <https://aka.ms/arc-sql-server>.
- Use Azure Login
- Use Service Principal
  - Azure Service Principal ID\*
  - Azure Service Principal Secret\*
  - Azure Subscription ID\*
  - Azure Resource Group\*
  - Azure Region\*
  - Azure Tenant ID\*
  - Proxy Server URL (optional)

At the bottom right, there are three buttons: '< Back', 'Next >', and 'Cancel'. The 'Next >' button is highlighted with a red rectangle.





SQL Server 2022 Setup

## Instance Configuration

Specify the name and instance ID for the instance of SQL Server. Instance ID becomes part of the installation path.

Default instance

Named instance: \*

Instance ID:

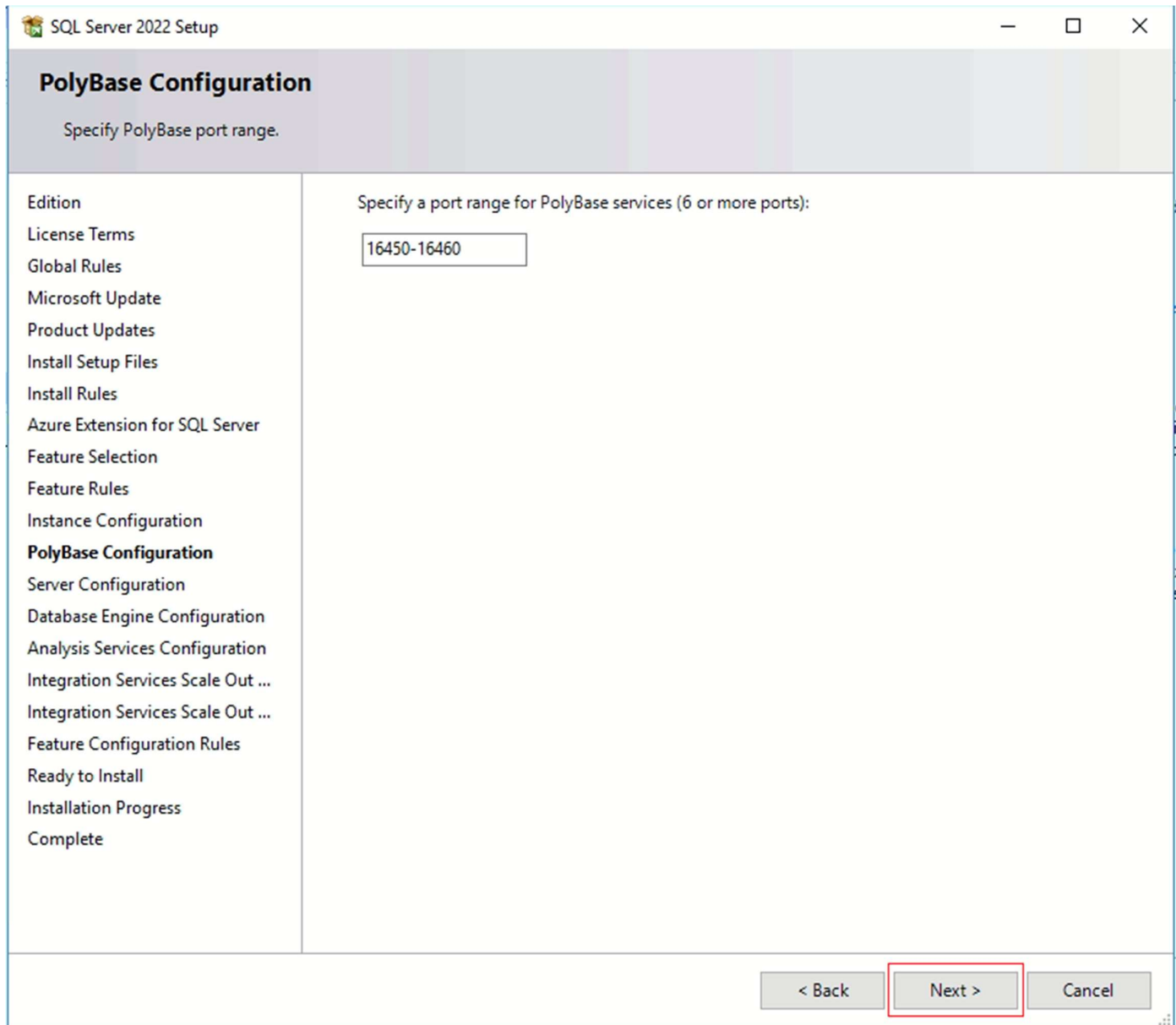
SQL Server directory: C:\Program Files\Microsoft SQL Server\MSSQL16.MSSQLSERVER

Analysis Services directory: C:\Program Files\Microsoft SQL Server\MSAS16.MSSQLSERVER

Installed instances:

Instance Name	Instance ID	Features	Edition	Version
---------------	-------------	----------	---------	---------

< Back   **Next >**   Cancel



SQL Server 2022 Setup

## Server Configuration

Specify the service accounts and collation configuration.

Edition

License Terms

Global Rules

Microsoft Update

Product Updates

Install Setup Files

Install Rules

Azure Extension for SQL Server

Feature Selection

Feature Rules

Instance Configuration

PolyBase Configuration

**Server Configuration**

Database Engine Configuration

Analysis Services Configuration

Integration Services Scale Out ...

Integration Services Scale Out ...

Feature Configuration Rules

Ready to Install

Installation Progress

Complete

Service Accounts Collation

Microsoft recommends that you use a separate account for each SQL Server service.

Service	Account Name	Password	Startup Type
SQL Server Agent	NT Service\SQLSERVERA...		Manual
SQL Server Database Engine	NT Service\MSSQLSERVER		Automatic
SQL Server Analysis Services	NT Service\MSSQLServe...		Automatic
SQL Server Integration Services 16.0	NT Service\MsDtsServer...		Automatic
SQL Server Integration Services Sc...	NT Service\SSISScaleOut...		Automatic
SQL Server Integration Services Sc...	NT Service\SSISScaleOut...		Automatic
SQL Server PolyBase Engine	NT AUTHORITY\NETW...		Automatic
SQL Server PolyBase Data Movem...	NT AUTHORITY\NETW...		Automatic
SQL Server Launchpad	NT Service\MSSQLLaun...		Automatic
SQL Full-text Filter Daemon Launc...	NT Service\MSSQLFDLa...		Manual
SQL Server Browser	NT AUTHORITY\LOCAL ...		Disabled

Grant Perform Volume Maintenance Tasks privilege to SQL Server Database Engine

This privilege enables instant file initialization by avoiding zeroing of data pages. This may lead to information disclosure by allowing deleted content to be accessed.

[Click here for details](#)

< Back Next > Cancel

SQL Server 2022 Setup

## Server Configuration

Specify the service accounts and collation configuration.

Edition

License Terms

Global Rules

Microsoft Update

Product Updates

Install Setup Files

Install Rules

Azure Extension for SQL Server

Feature Selection

Feature Rules

Instance Configuration

PolyBase Configuration

**Server Configuration**

Database Engine Configuration

Analysis Services Configuration

Integration Services Scale Out ...

Integration Services Scale Out ...

Feature Configuration Rules

Ready to Install

Installation Progress

Complete

Service Accounts Collation

Microsoft recommends that you use a separate account for each SQL Server service.

Service	Account Name	Password	Startup Type
SQL Server Agent	NT Service\SQLSERVERA...		Manual
SQL Server Database Engine	NT Service\MSSQLSERVER		Automatic
SQL Server Analysis Services	NT Service\MSSQLServe...		Automatic
SQL Server Integration Services 16.0	NT Service\MsDtsServer...		Automatic
SQL Server Integration Services Sc...	NT Service\SSISScaleOut...		Automatic
SQL Server Integration Services Sc...	NT Service\SSISScaleOut...		Automatic
SQL Server PolyBase Engine	NT AUTHORITY\NETW...		Automatic
SQL Server PolyBase Data Movem...	NT AUTHORITY\NETW...		Automatic
SQL Server Launchpad	NT Service\MSSQLLaun...		Automatic
SQL Full-text Filter Daemon Launc...	NT Service\MSSQLFDLa...		Manual
SQL Server Browser	NT AUTHORITY\LOCAL ...		Automatic

Grant Perform Volume Maintenance Tasks privilege to SQL Server Database Engine Service

This privilege enables instant file initialization by avoiding zeroing of data pages. This may lead to information disclosure by allowing deleted content to be accessed.

[Click here for details](#)

< Back Next > Cancel

SQL Server 2022 Setup

## Database Engine Configuration

Specify Database Engine authentication security mode, administrators, data directories, TempDB, Max degree of parallelism, Memory limits, and Filestream settings.

Edition  
License Terms  
Global Rules  
Microsoft Update  
Product Updates  
Install Setup Files  
Install Rules  
Azure Extension for SQL Server  
Feature Selection  
Feature Rules  
Instance Configuration  
PolyBase Configuration  
Server Configuration  
**Database Engine Configuration**  
Analysis Services Configuration  
Integration Services Scale Out ...  
Integration Services Scale Out ...  
Feature Configuration Rules  
Ready to Install  
Installation Progress  
Complete

Server Configuration | Data Directories | TempDB | MaxDOP | Memory | FILESTREAM

Specify the authentication mode and administrators for the Database Engine.

Authentication Mode \_\_\_\_\_

Windows authentication mode  
 Mixed Mode (SQL Server authentication and Windows authentication)

Specify the password for the SQL Server system administrator (sa) account. \_\_\_\_\_

Enter password:  **as**

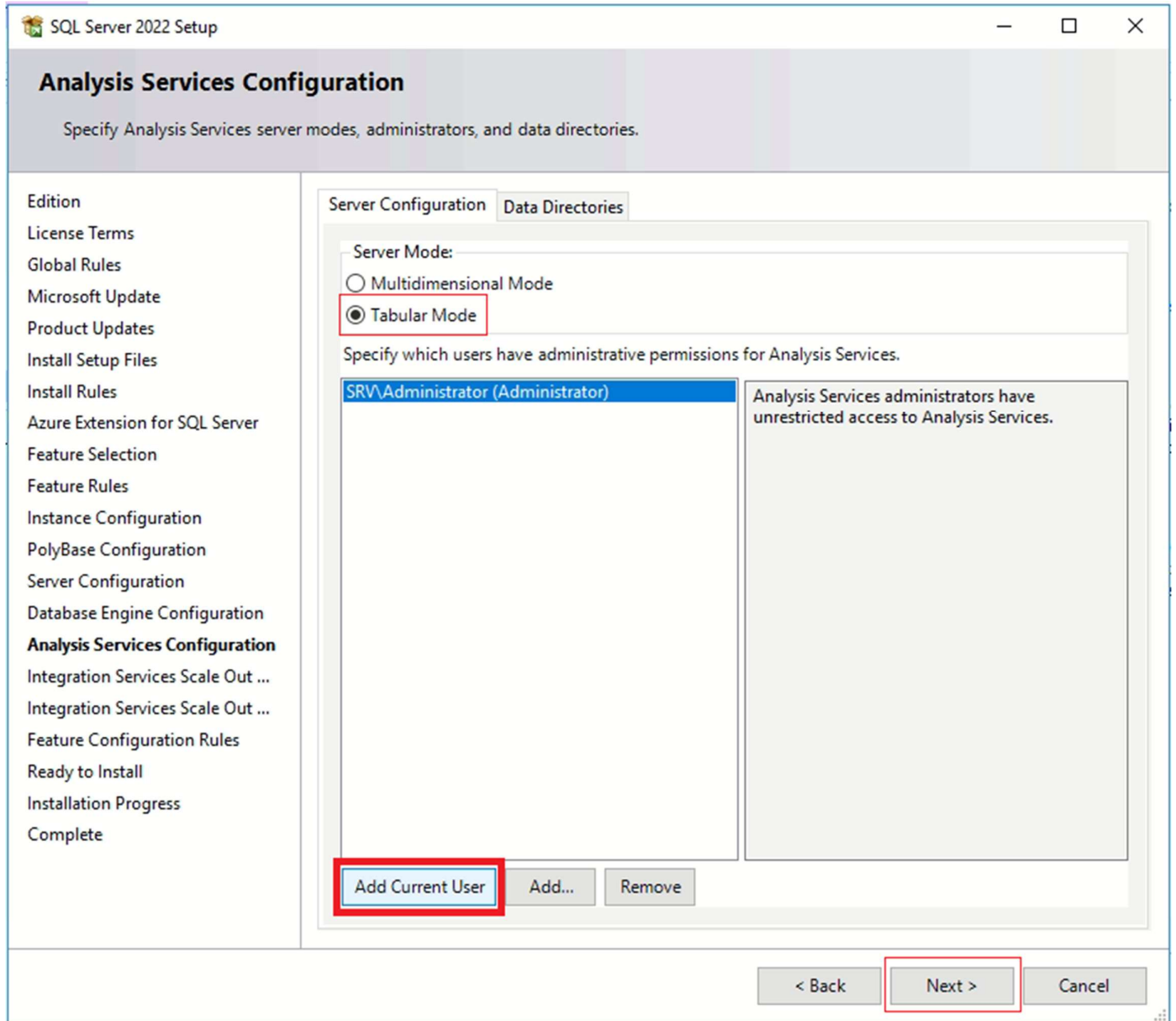
Confirm password:  **as**

Specify SQL Server administrators \_\_\_\_\_

**SRV\Administrator (Administrator)**

SQL Server administrators have unrestricted access to the Database Engine.

< Back  Cancel



SQL Server 2022 Setup

## Integration Services Scale Out Configuration - Master Node

Specify the port number and security certificate for the Scale Out Master node.

Specify a port number that the master node uses to communicate with the worker nodes.

Port Number:

Select a SSL certificate that is used for the communication between the master node and worker nodes in the scale out topology. A default self-signed certificate is created if you choose to create a new SSL certificate.

Create a new SSL certificate

CNs in the certificate:

Use an existing SSL certificate

< Back **Next >** Cancel

SQL Server 2022 Setup

## Integration Services Scale Out Configuration - Worker Node

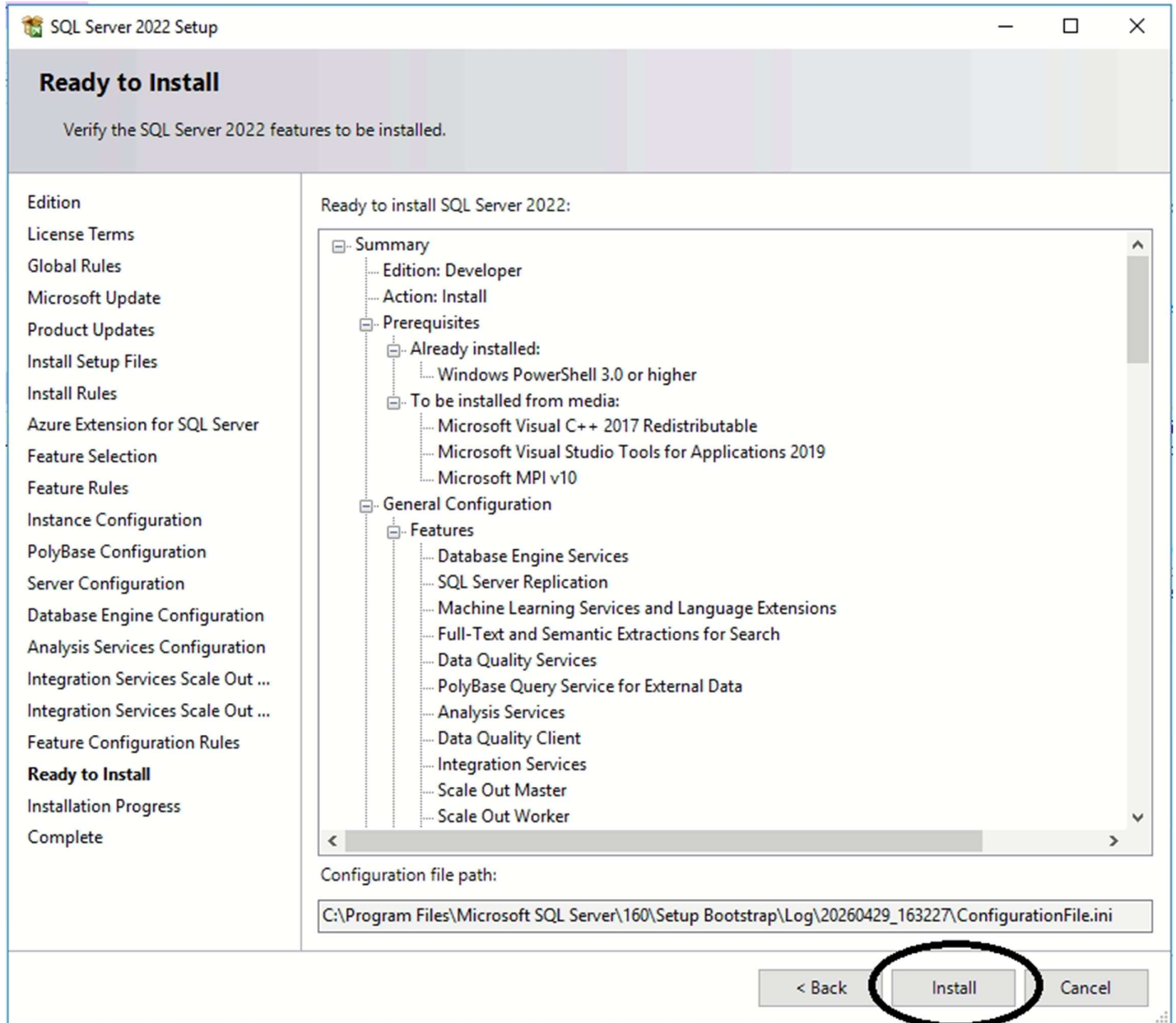
Specify the master node endpoint and security certificate used by the Scale Out Worker node.

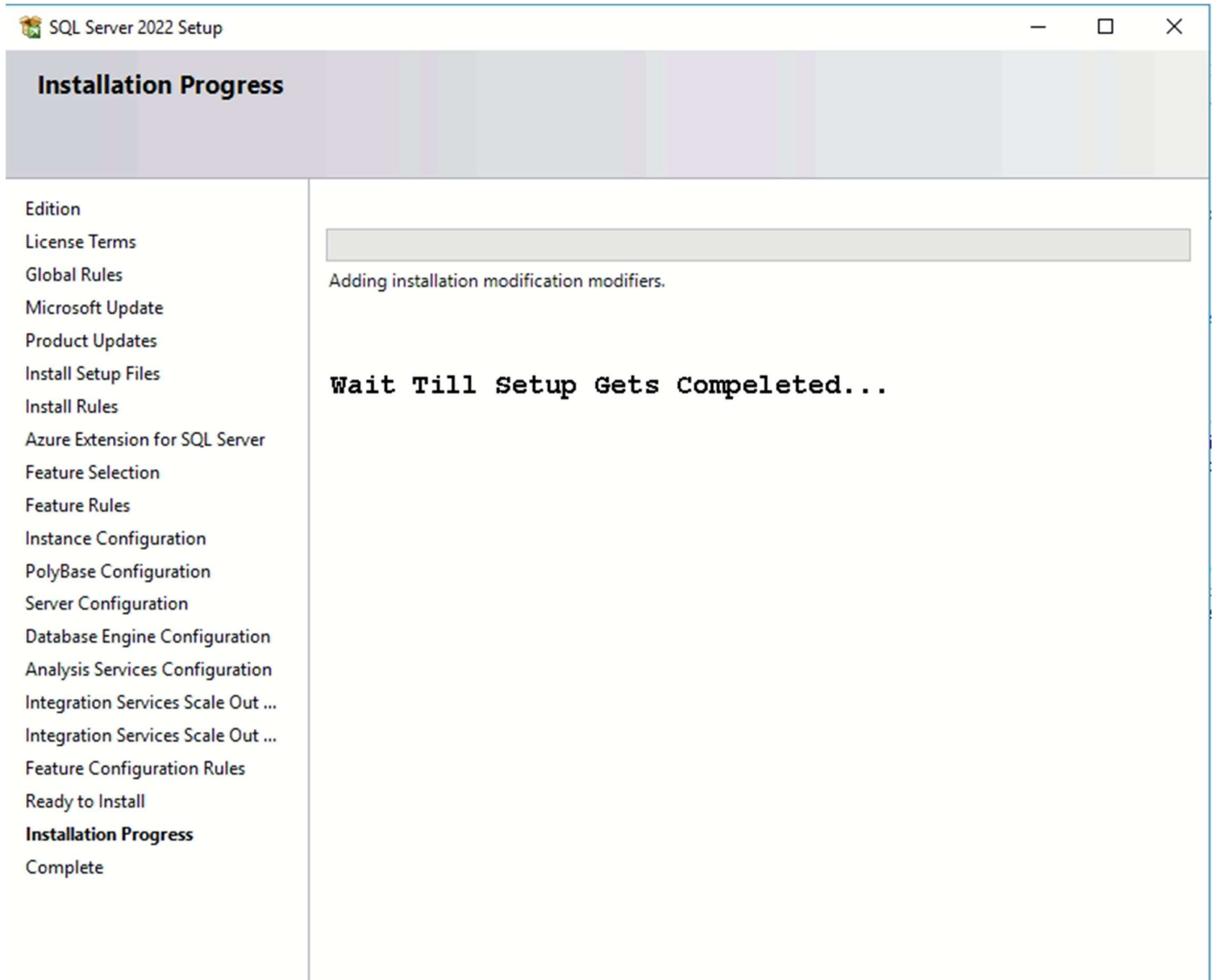
Edition  
License Terms  
Global Rules  
Microsoft Update  
Product Updates  
Install Setup Files  
Install Rules  
Azure Extension for SQL Server  
Feature Selection  
Feature Rules  
Instance Configuration  
PolyBase Configuration  
Server Configuration  
Database Engine Configuration  
Analysis Services Configuration  
Integration Services Scale Out ...  
**Integration Services Scale Ou...**  
Feature Configuration Rules  
Ready to Install  
Installation Progress  
Complete

Provide the master node endpoint which the worker node needs to connect to (e.g. https://[MasterNodeMachineName]:[Port]):

Configure the SSL certificate of master node to trust in this machine. The master's SSL certificate needs to be trusted on this worker node for establishing the connection between worker and master. This is optional if your master certificate has already been trusted, i.e. it's issued by a trusted CA (Certification Authority) on this machine, or the master is installed on the same machine. Otherwise, please provide the master's client SSL certificate, i.e. the certificate is created and self-signed by yourself and the master is not on the same machine.

< Back   **Next >**   Cancel





SQL Server 2022 Setup

## Complete

Your SQL Server 2022 installation completed successfully with product updates.

Information about the Setup operation or possible next steps:

Feature	Status
✓ Master Data Services	Succeeded
✓ Data Quality Services	Succeeded
✓ Full-Text and Semantic Extractions for Search	Succeeded
✓ PolyBase Query Service for External Data	Succeeded
✓ Machine Learning Services and Language Extens...	Succeeded
✓ Database Engine Services	Succeeded

Computer restart required

One or more affected files have operations pending. You must restart your computer after the setup process is completed.

Copy message

OK

Summary log file has been saved to the following location:  
[C:\Program Files\Microsoft SQL Server\160\Setup Bootstrap\Log\20260429\\_163227\Summary\\_SRV\\_20260429\\_163227.txt](C:\Program Files\Microsoft SQL Server\160\Setup Bootstrap\Log\20260429_163227\Summary_SRV_20260429_163227.txt)

Navigation pane (left):

- Edition
- License Terms
- Global Rules
- Microsoft Update
- Product Updates
- Install Setup Files
- Install Rules
- Azure Extension
- Feature Selection
- Feature Rules
- Instance Configuration
- PolyBase Configuration
- Server Configuration
- Database Engine Configuration
- Analysis Services Configuration
- Integration Services Scale Out ...
- Integration Services Scale Out ...
- Feature Configuration Rules
- Ready to Install
- Installation Progress
- Complete**

SQL Server 2022 Setup

## Complete

Your SQL Server 2022 installation completed successfully with product updates.

Information about the Setup operation or possible next steps:

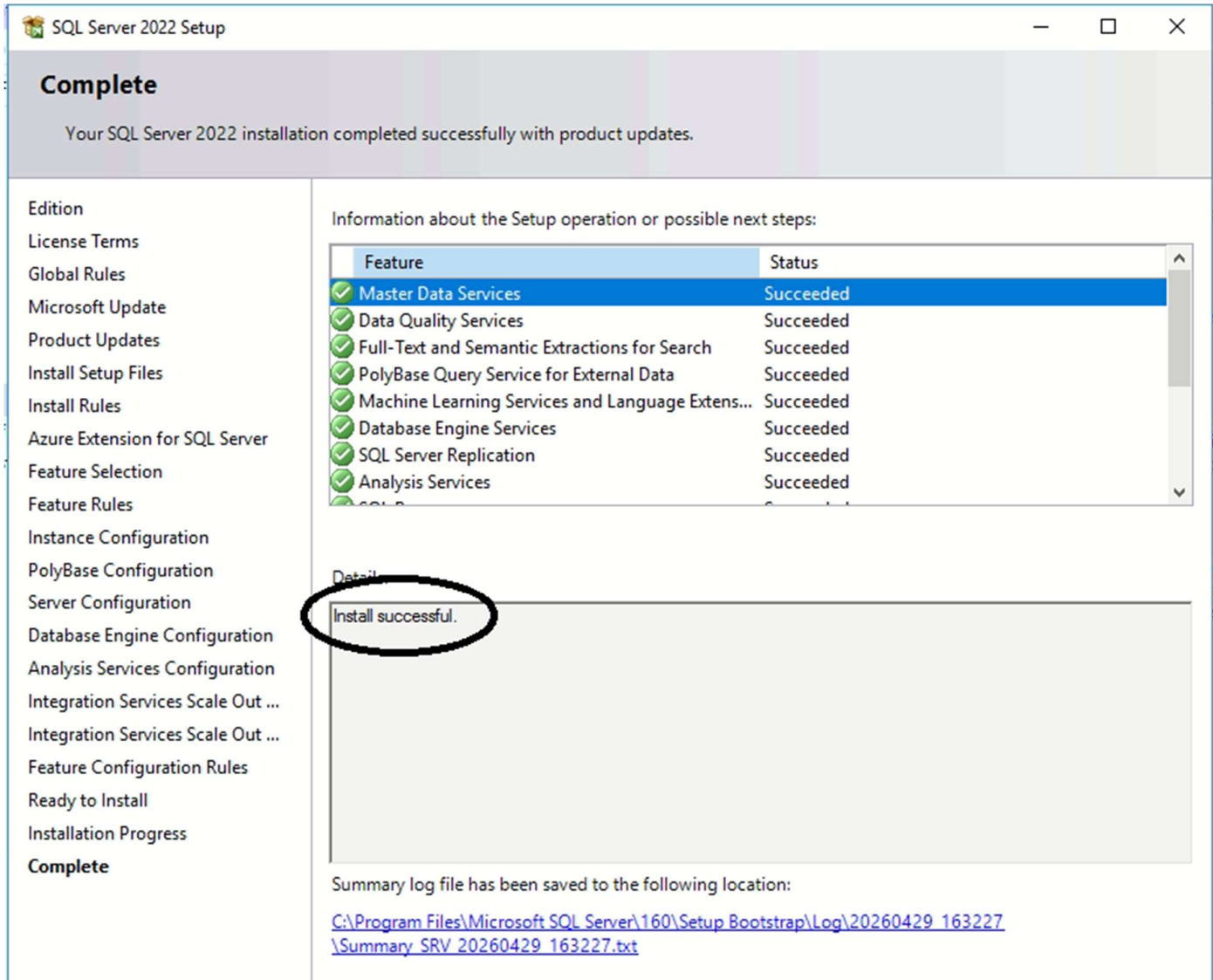
Feature	Status
✓ Master Data Services	Succeeded
✓ Data Quality Services	Succeeded
✓ Full-Text and Semantic Extractions for Search	Succeeded
✓ PolyBase Query Service for External Data	Succeeded
✓ Machine Learning Services and Language Extens...	Succeeded
✓ Database Engine Services	Succeeded

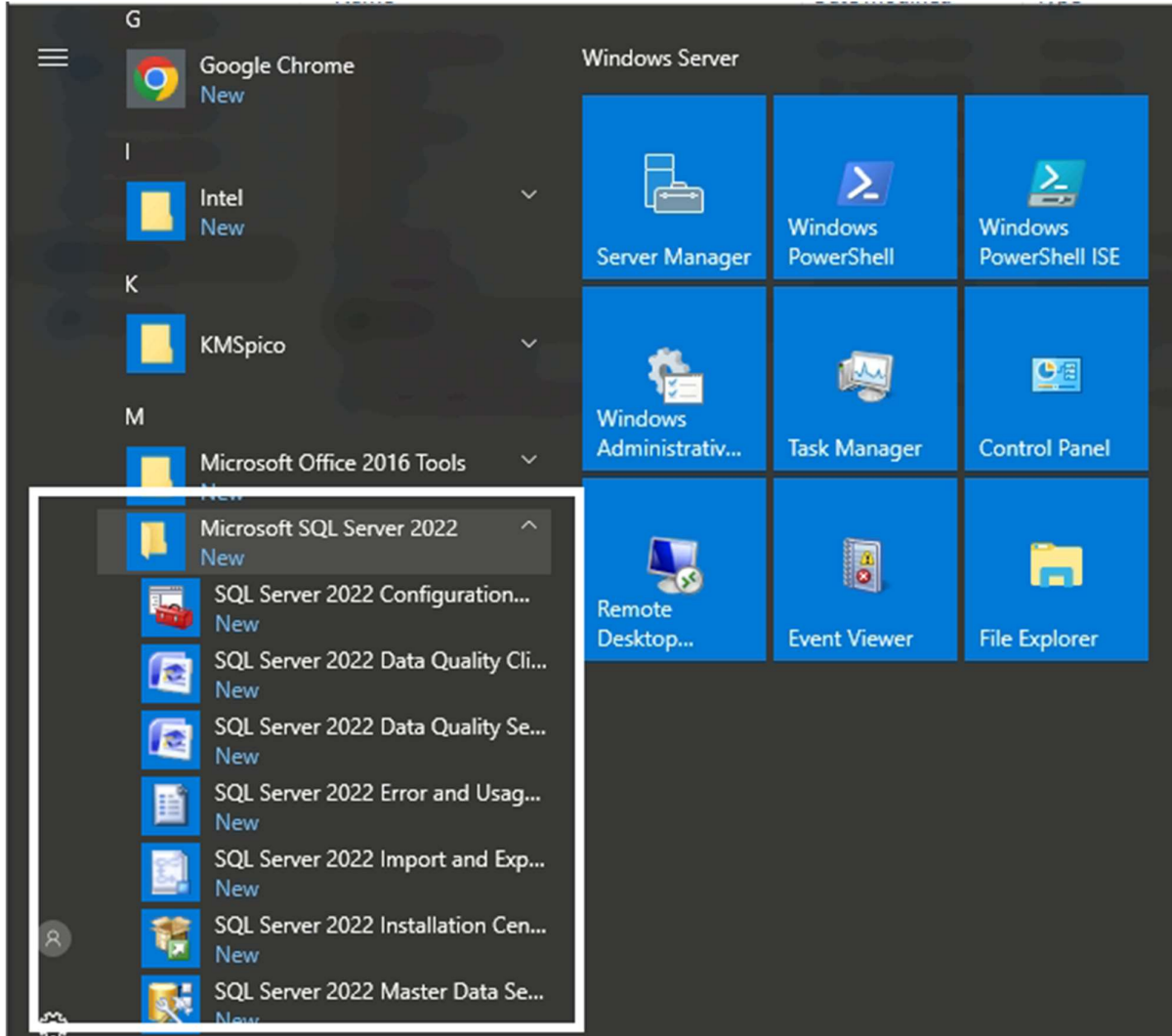
SQL Server 2022

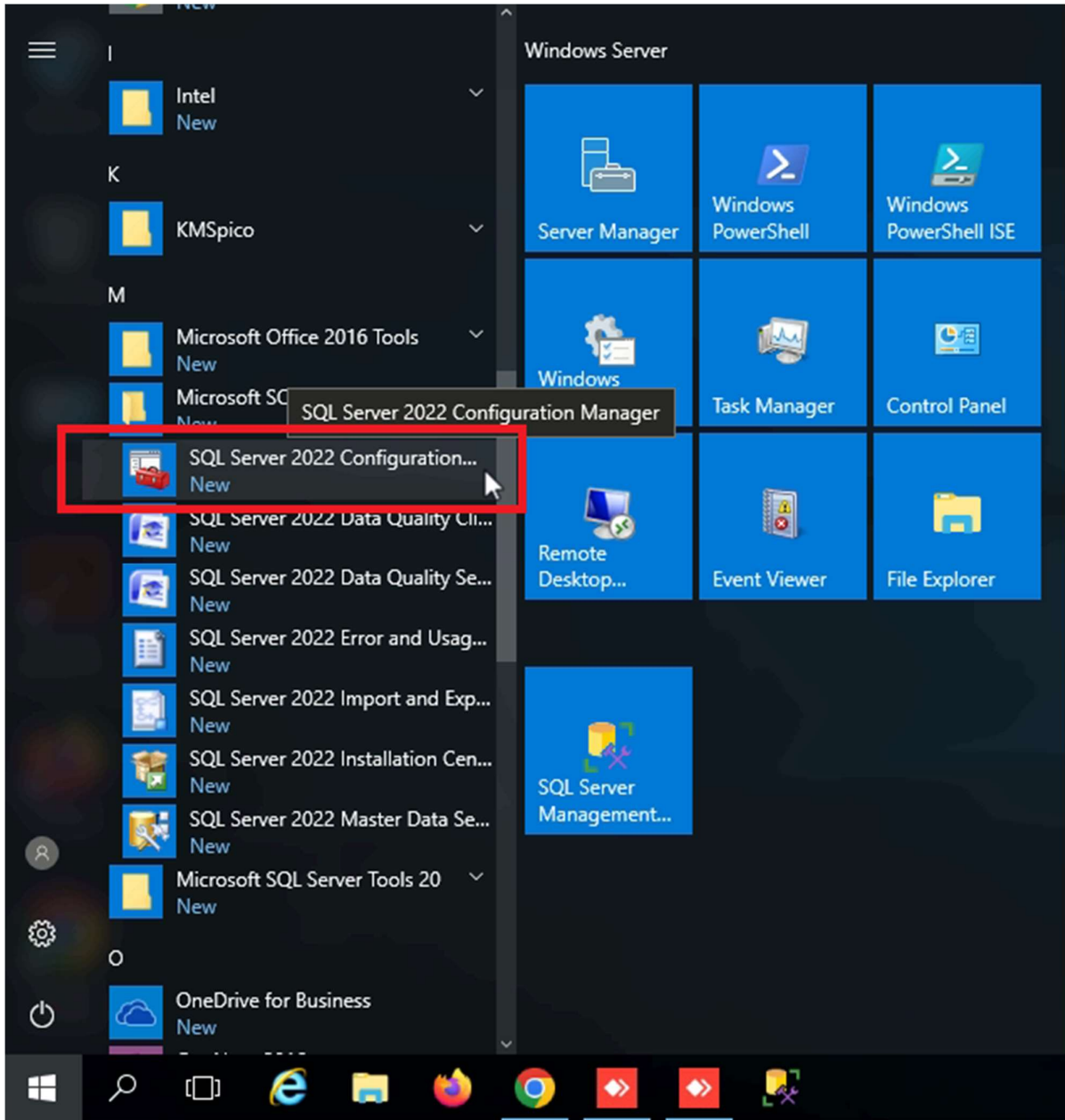
Please wait while Microsoft SQL Server 2022 Setup processes the current operation.

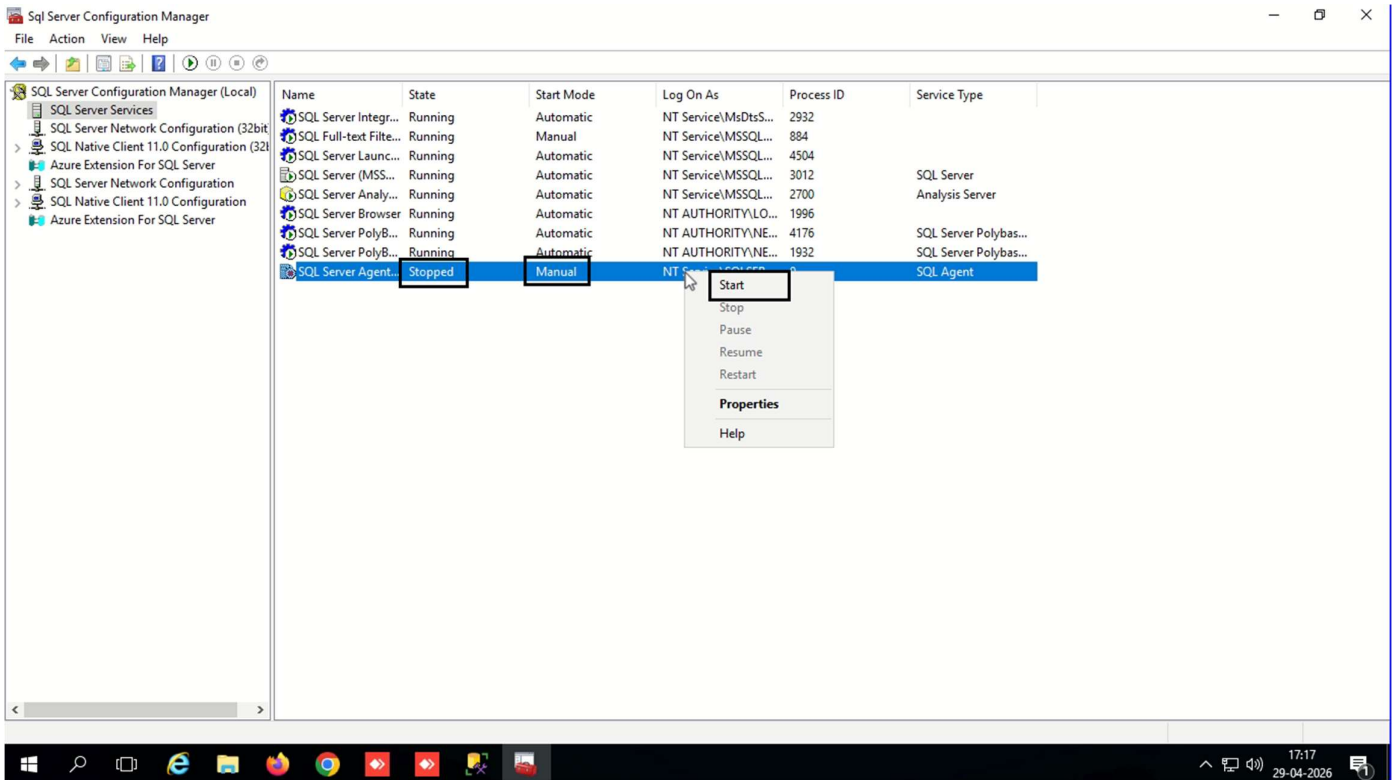
Summary log file has been saved to the following location:  
[C:\Program Files\Microsoft SQL Server\160\Setup Bootstrap\Log\20260429\\_163227\SUMMARY\\_SRV\\_20260429\\_163227.txt](C:\Program Files\Microsoft SQL Server\160\Setup Bootstrap\Log\20260429_163227\SUMMARY_SRV_20260429_163227.txt)

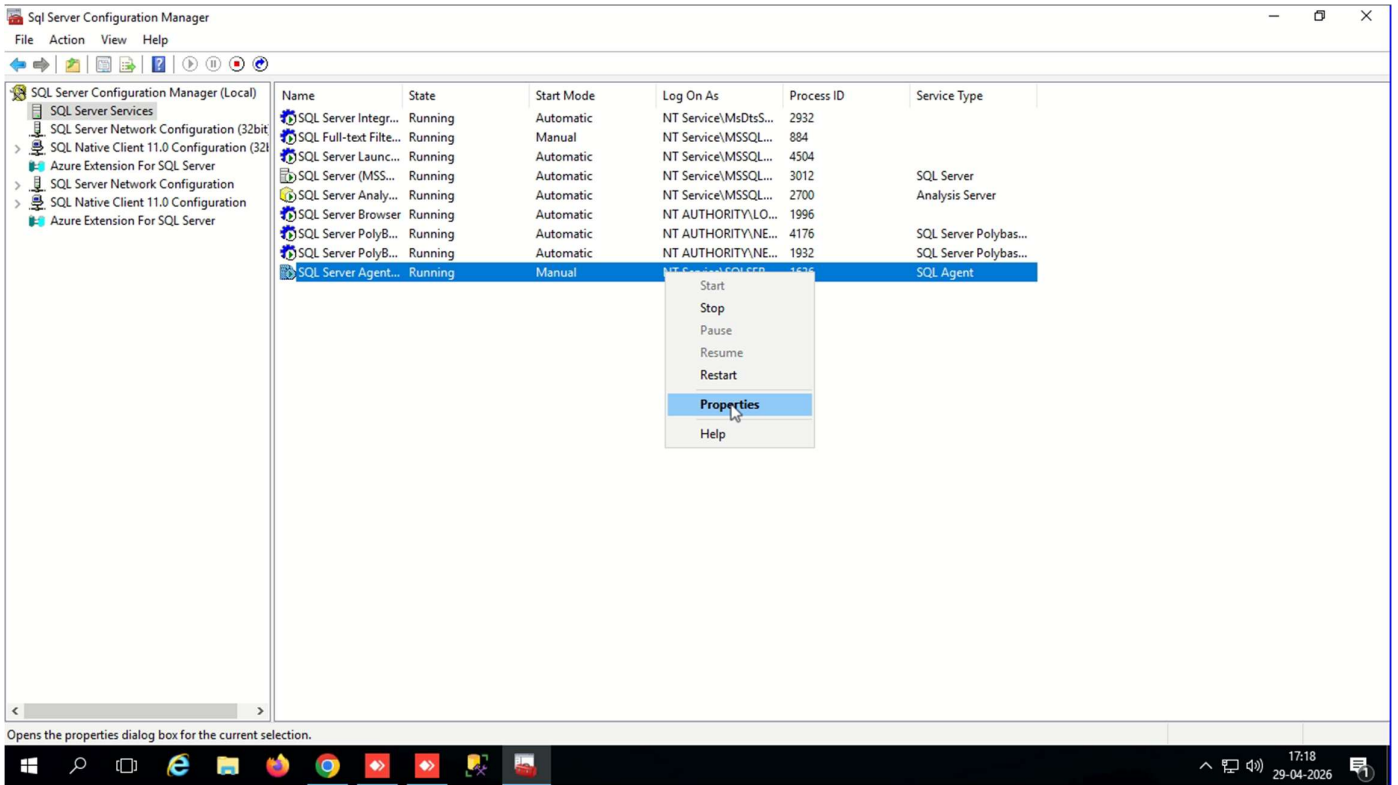
Edition  
 License Terms  
 Global Rules  
 Microsoft Update  
 Product Updates  
 Install Setup Files  
 Install Rules  
 Azure Extension for SQL Server  
 Feature Selection  
 Feature Rules  
 Instance Configuration  
 PolyBase Configuration  
 Server Configuration  
 Database Engine Configuration  
 Analysis Services Configuration  
 Integration Services Scale Out ...  
 Integration Services Scale Out ...  
 Feature Configuration Rules  
 Ready to Install  
 Installation Progress  
**Complete**

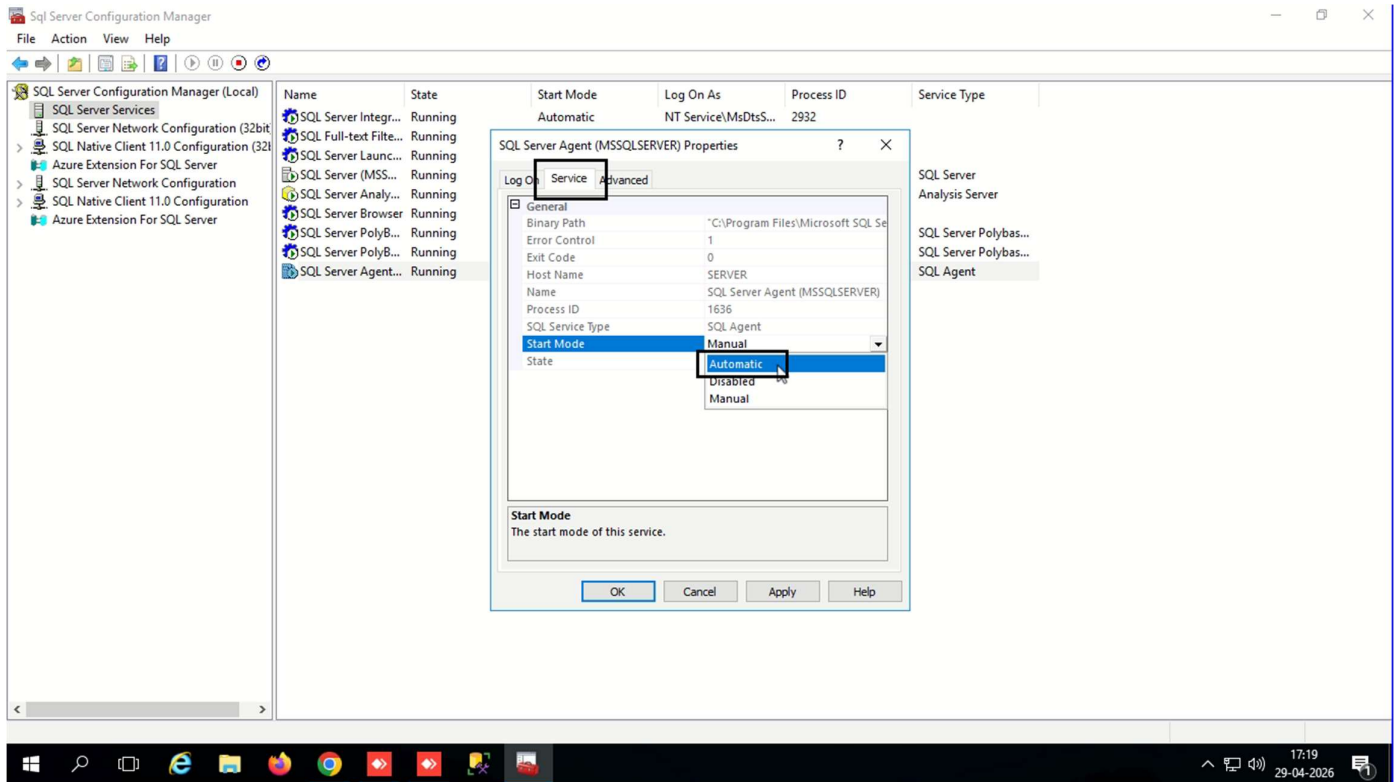


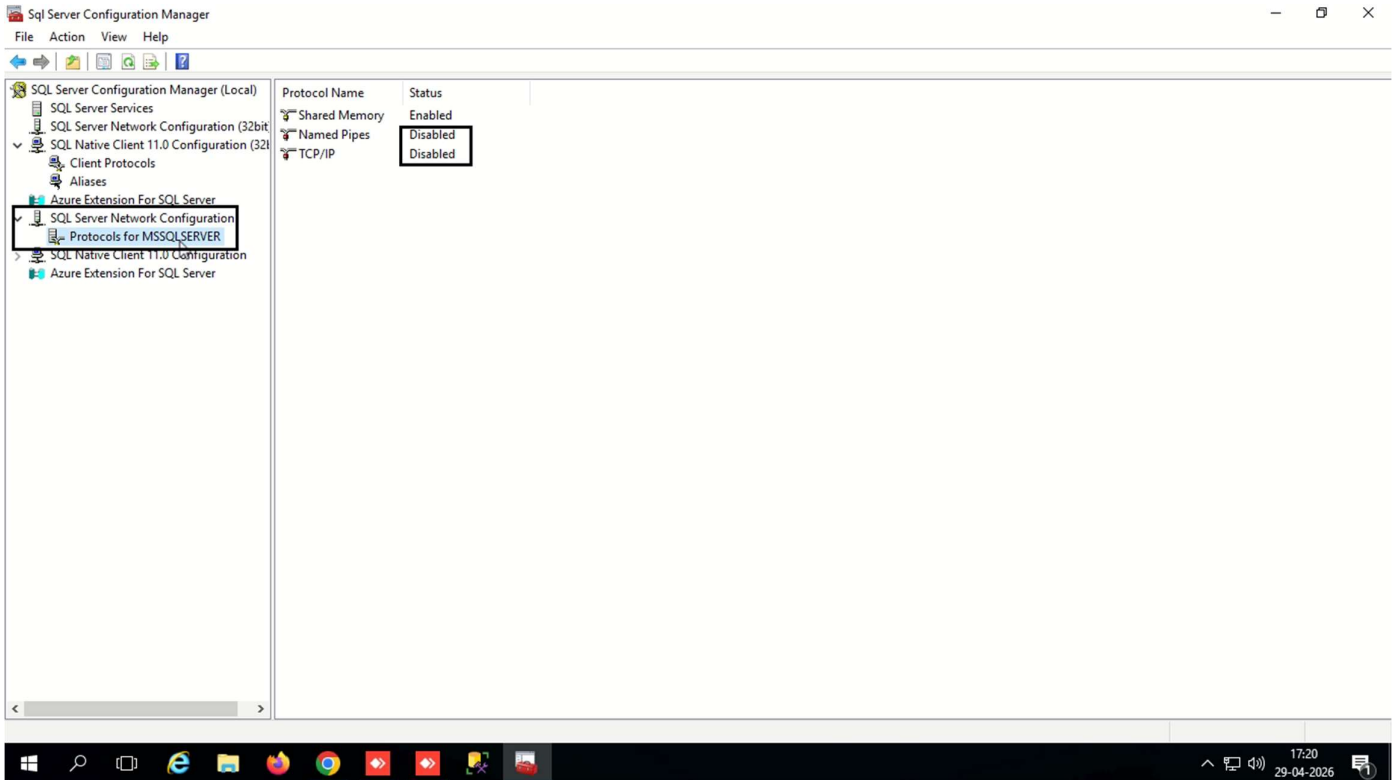


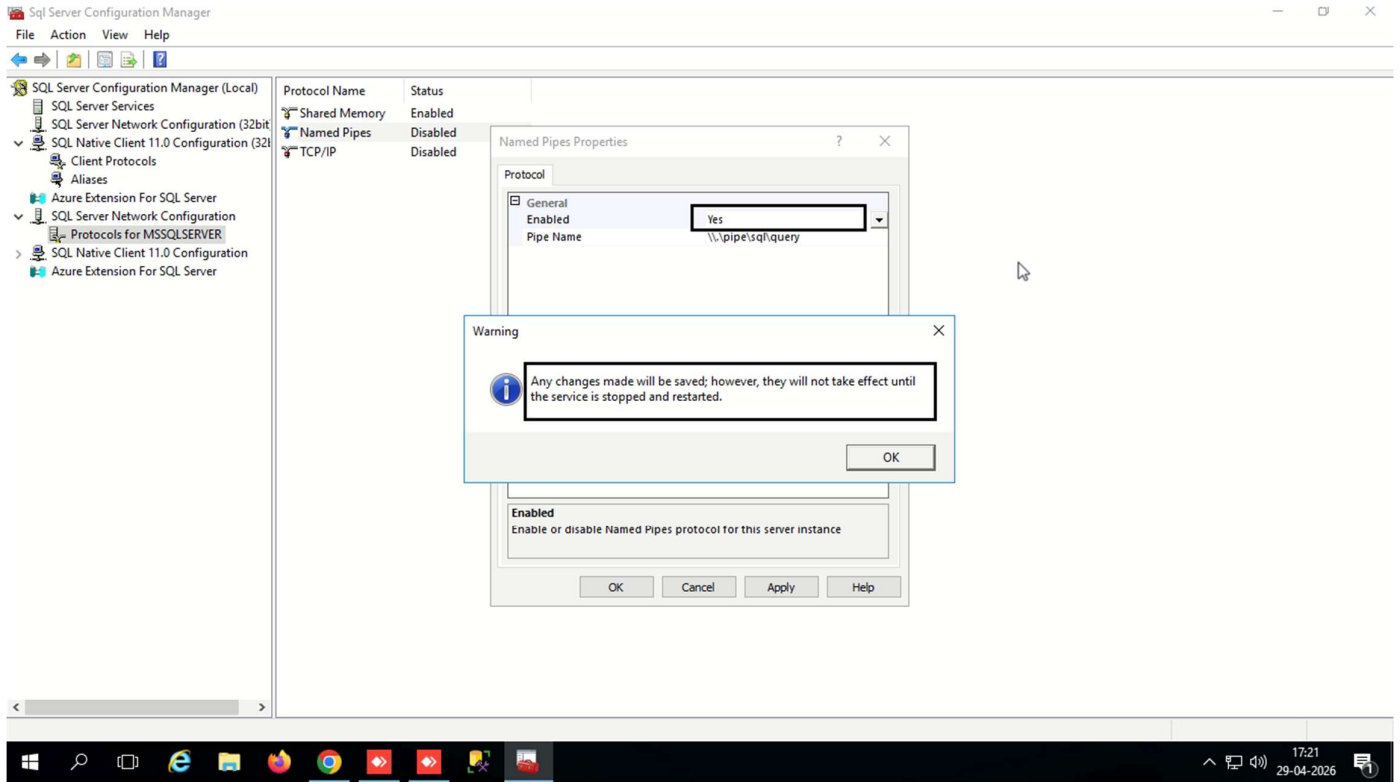


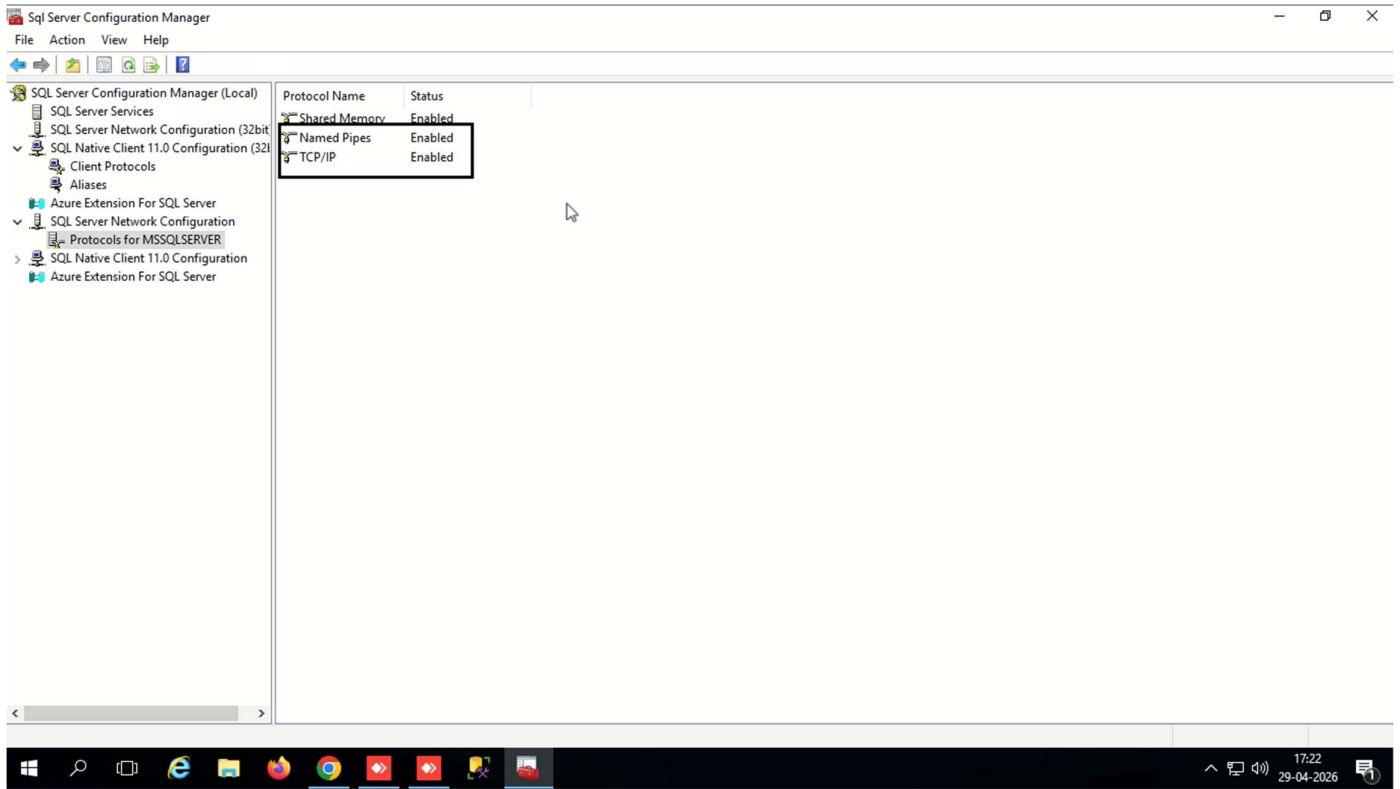


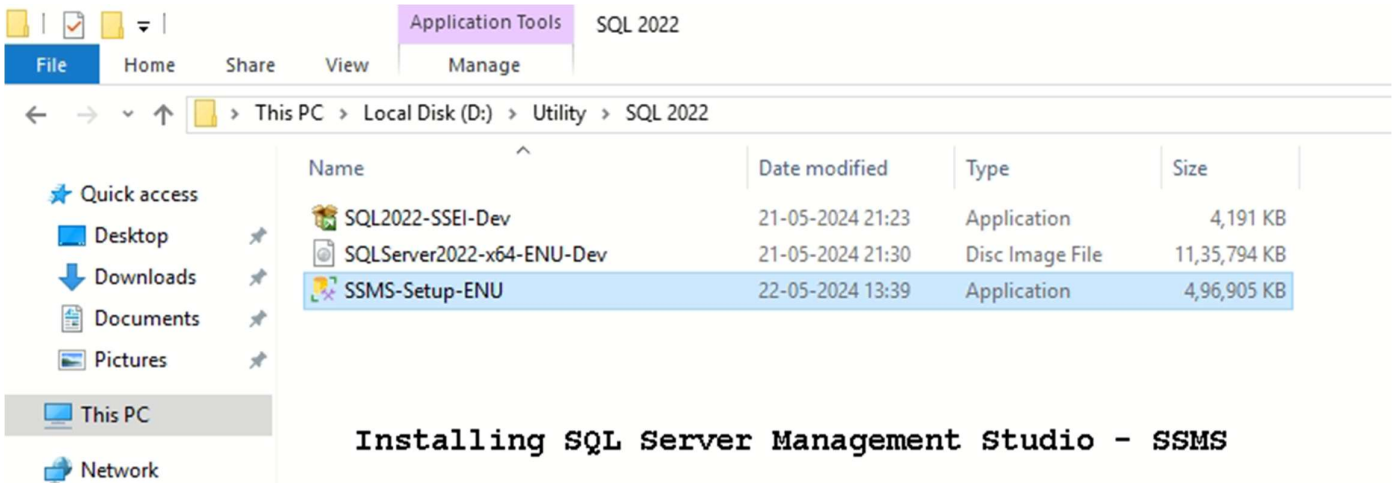
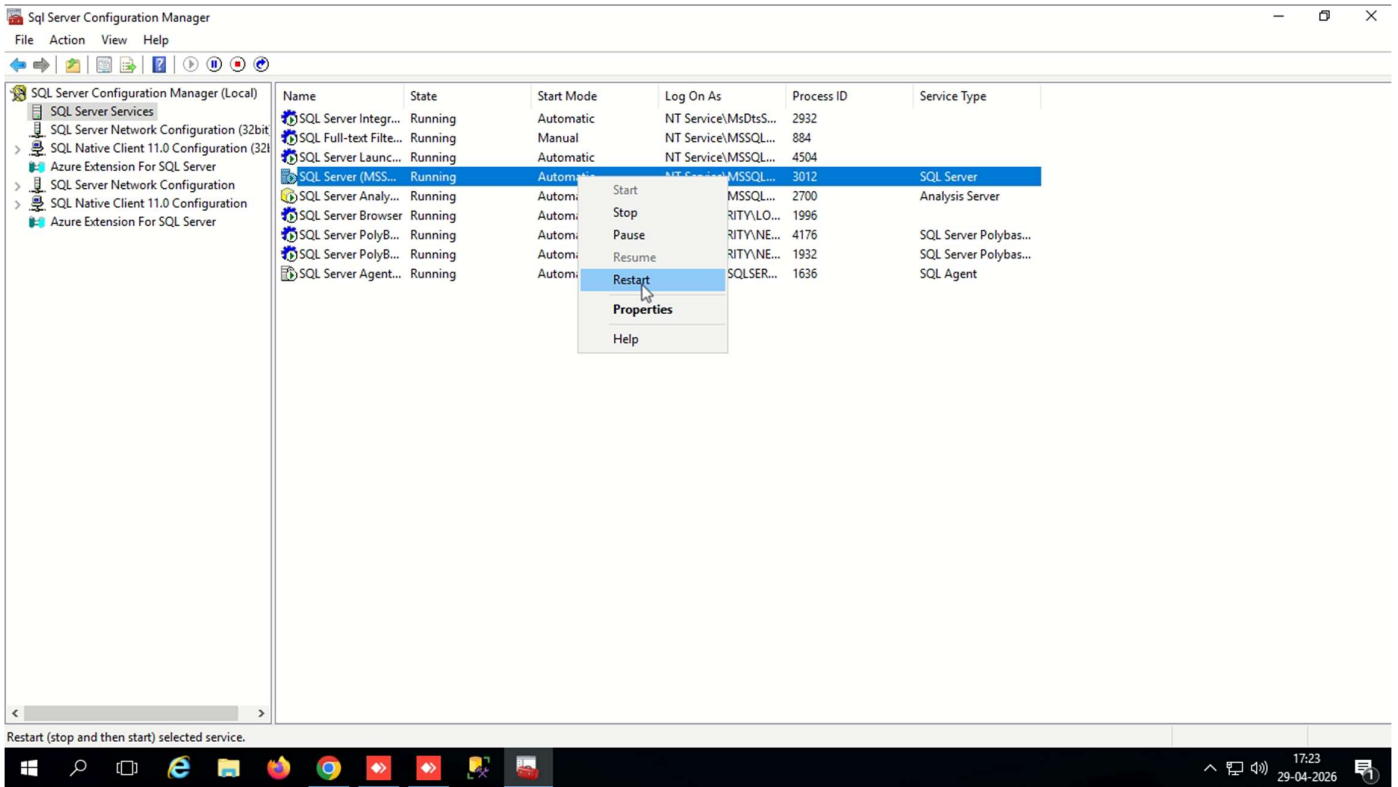




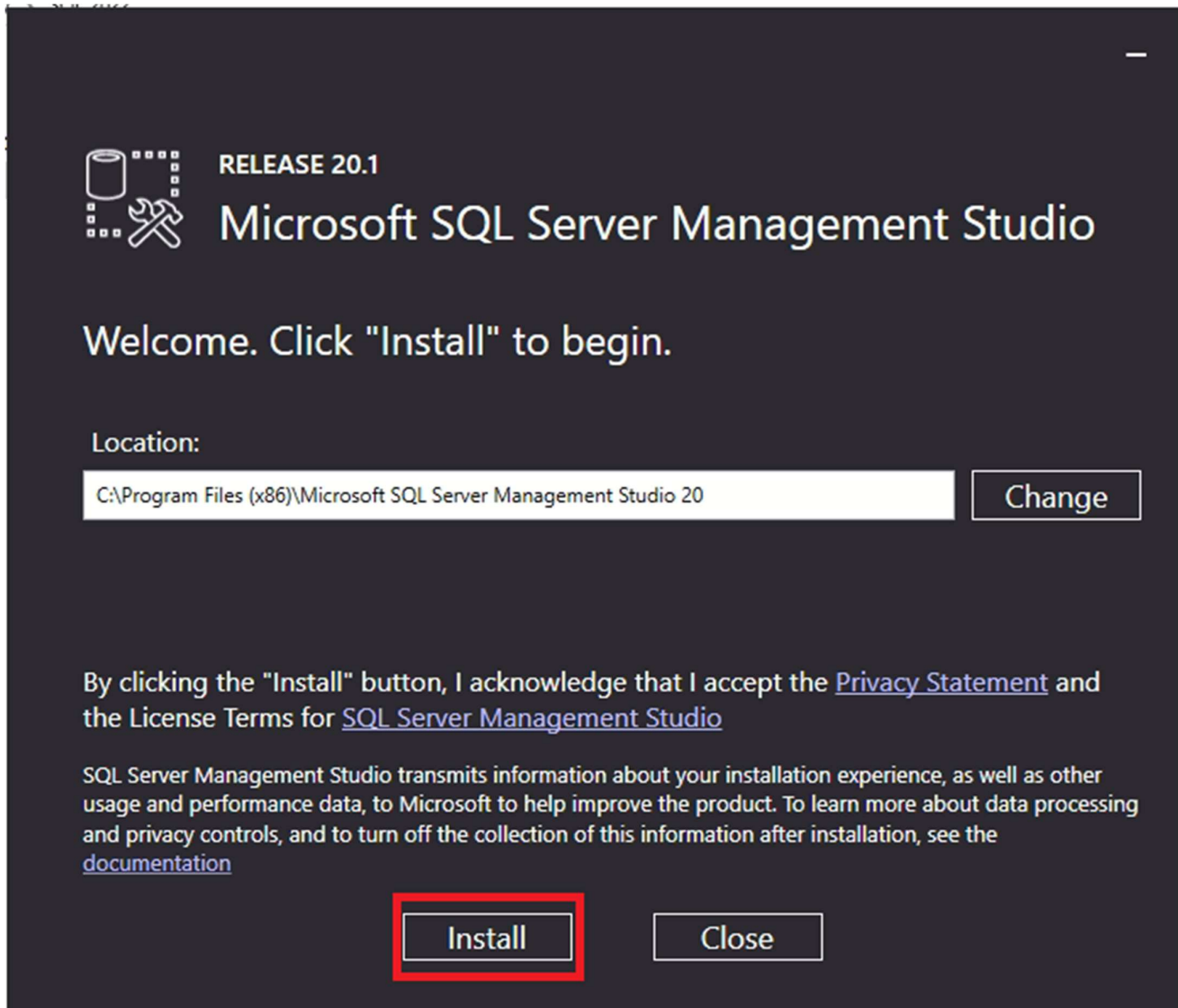








## Installing SQL Server Management Studio - SSMS





RELEASE 20.1

## Microsoft SQL Server Management Studio

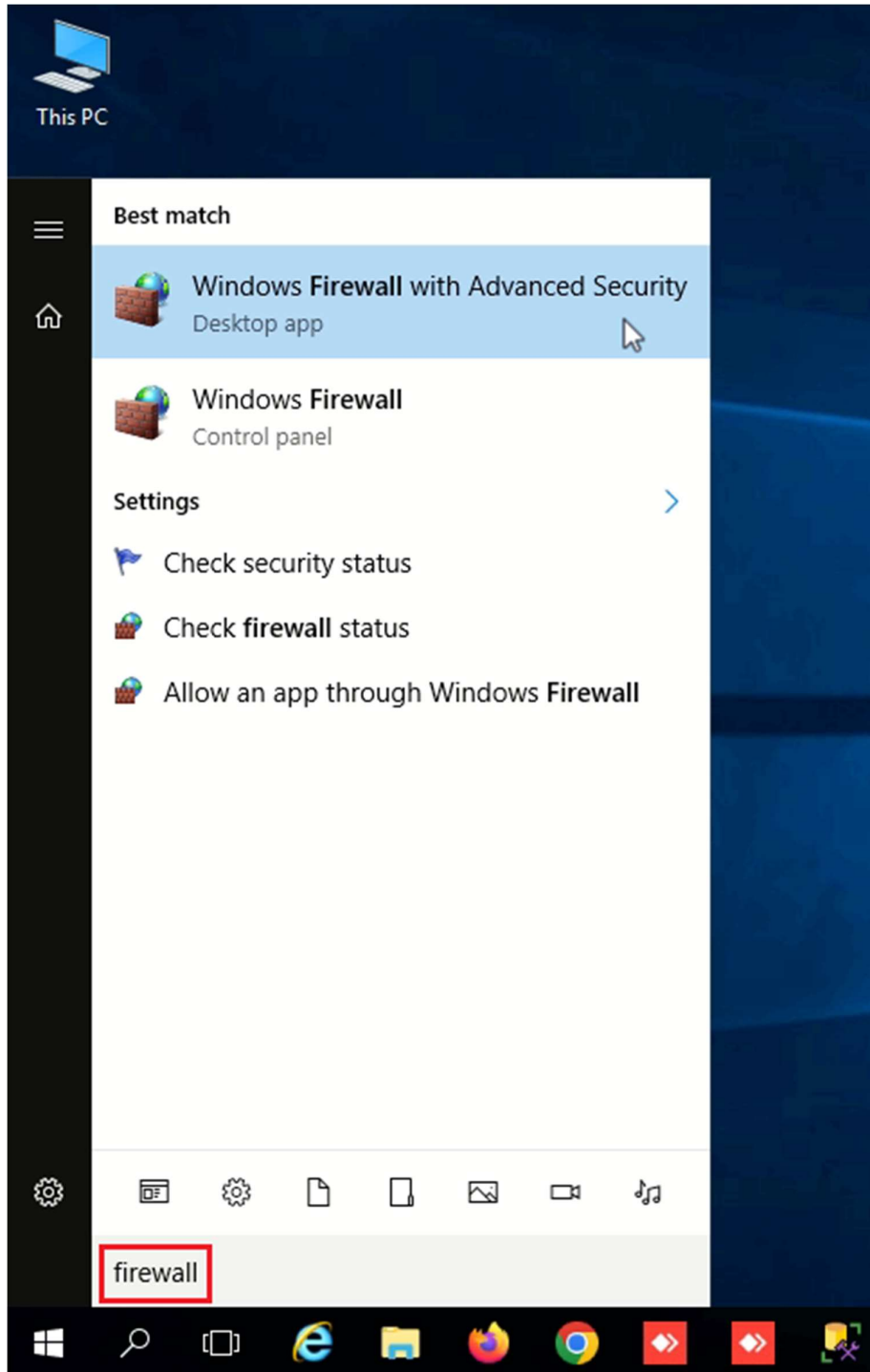
Restart required in order to complete setup.

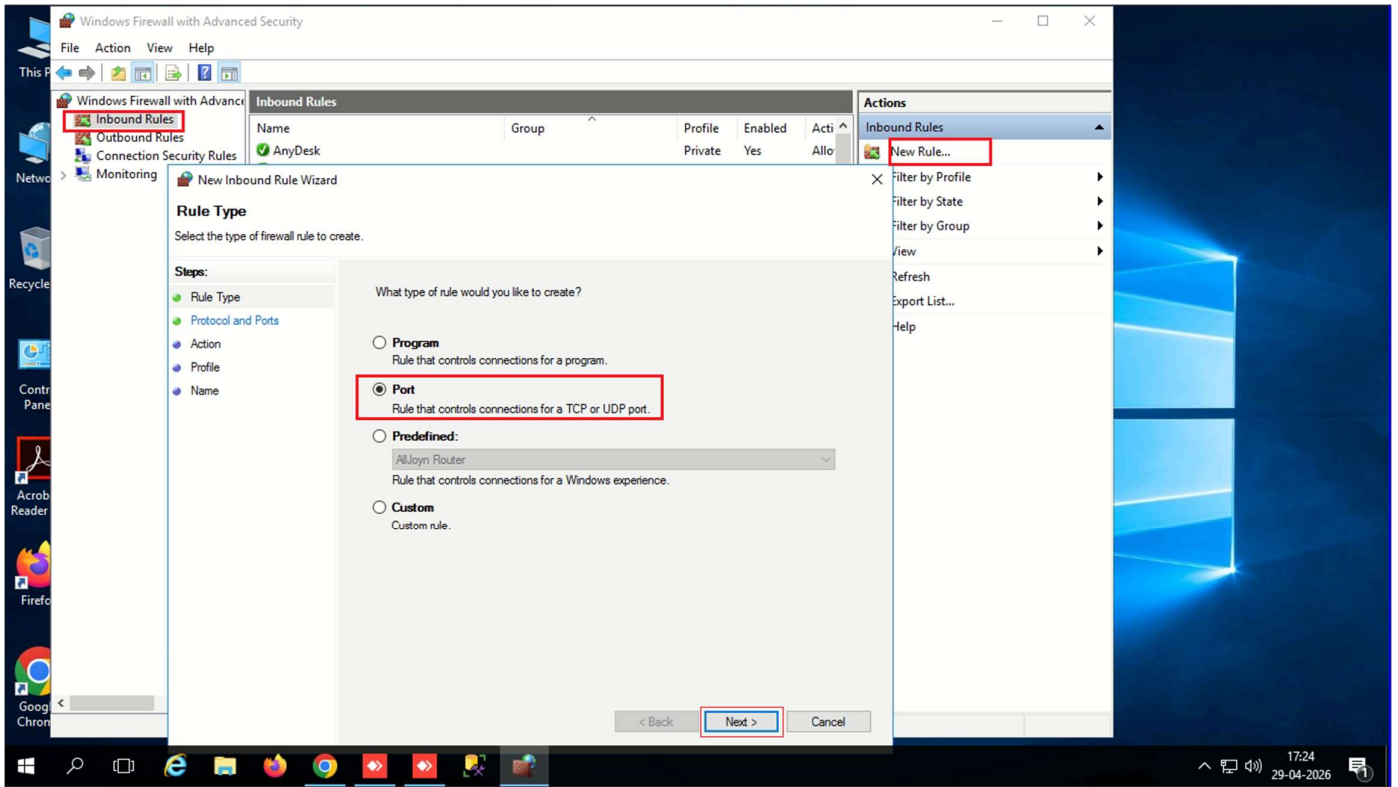
All specified components have been installed successfully.

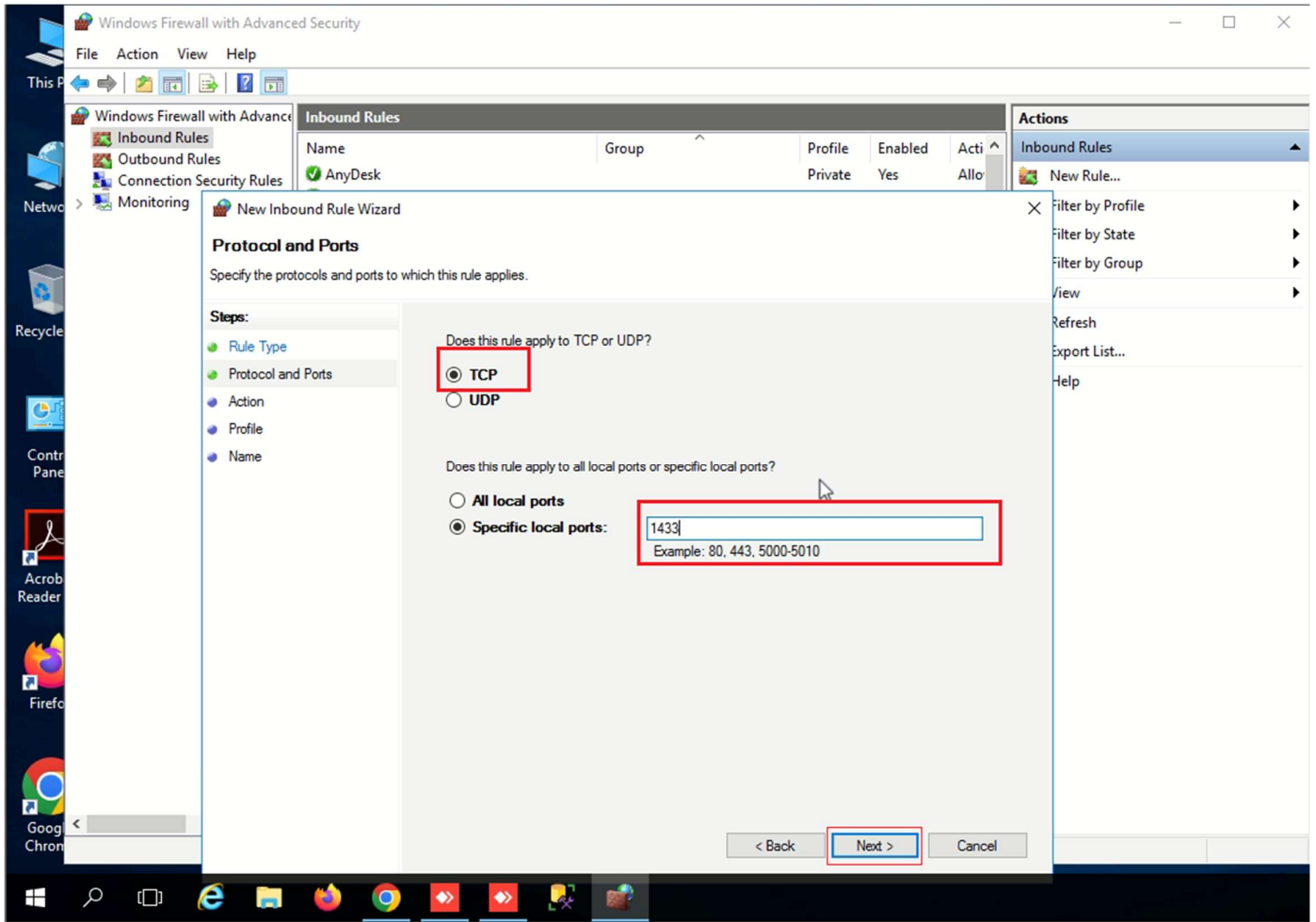
The computer needs to be restarted before setup can continue.

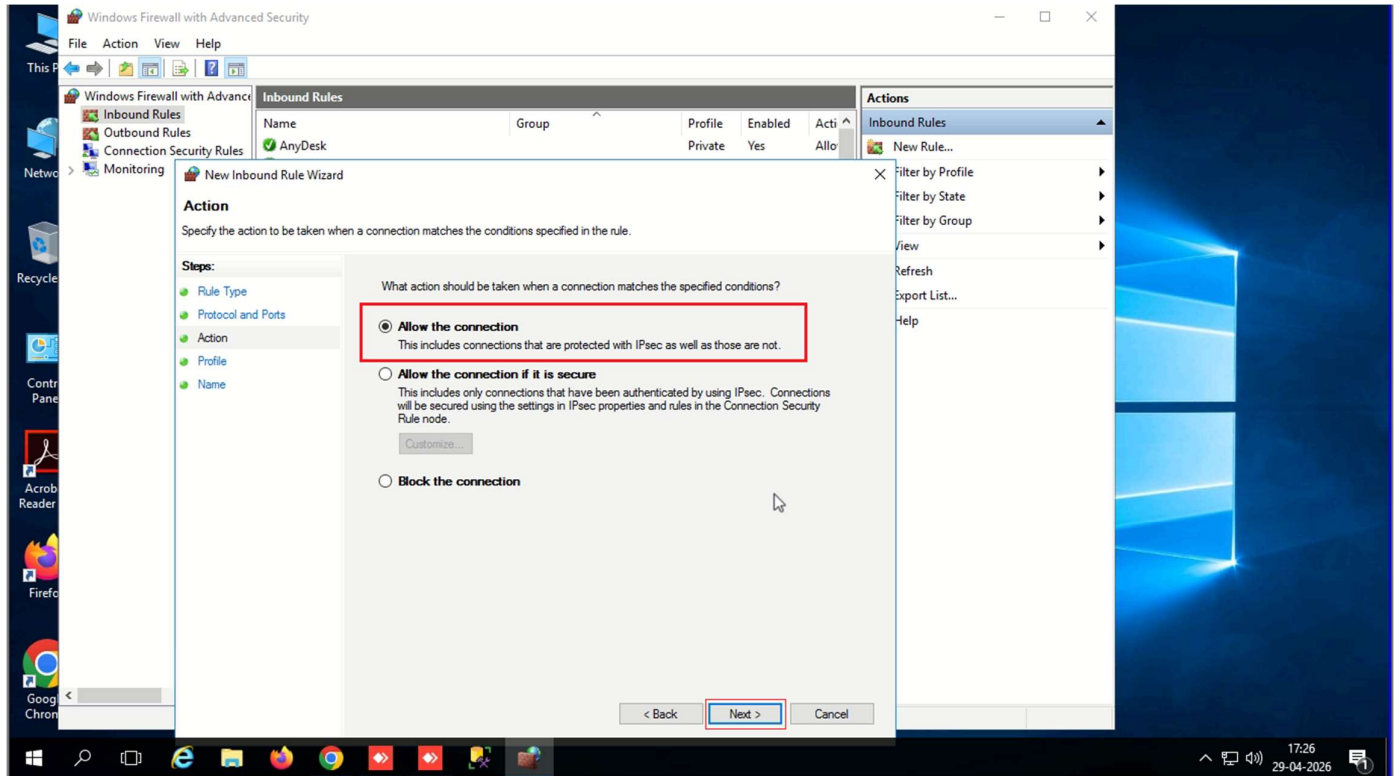
Restart

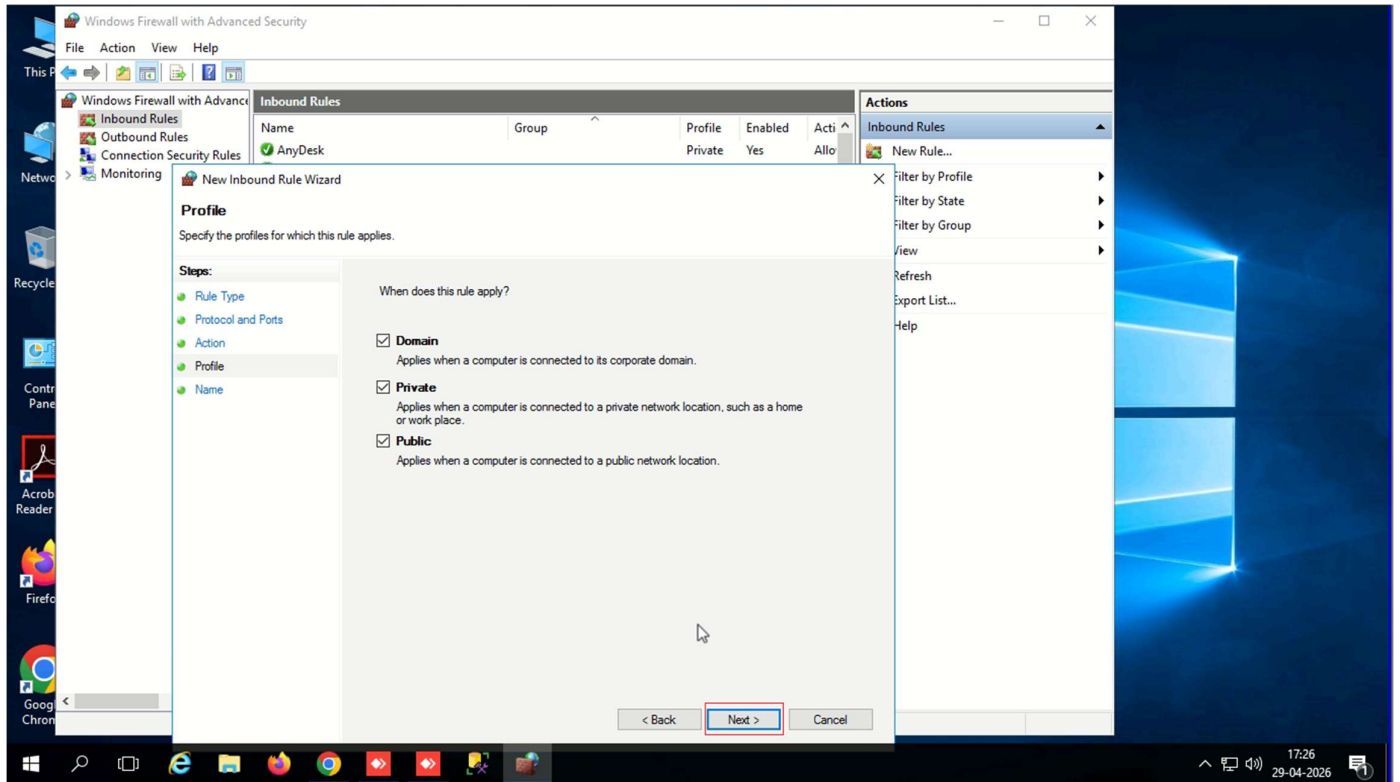
Close

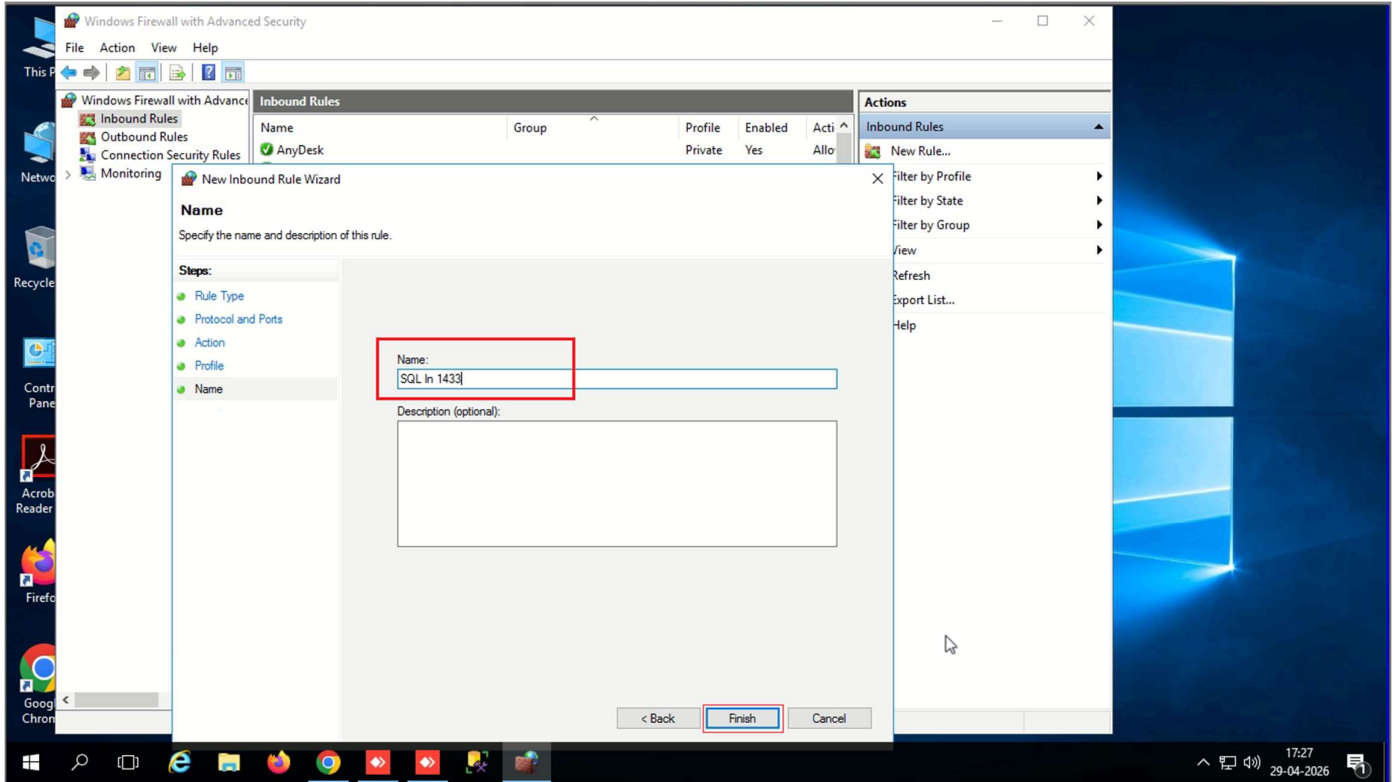


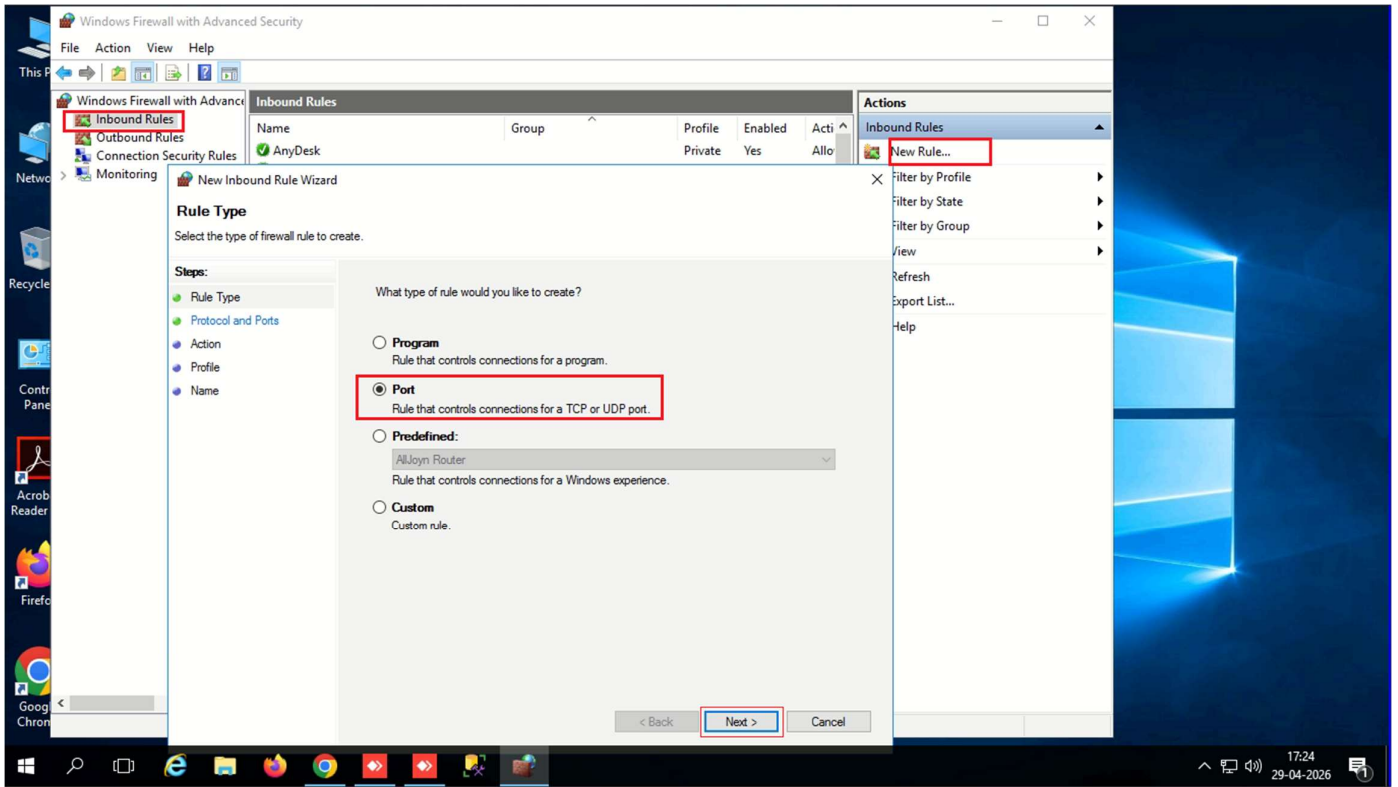












**New Inbound Rule Wizard** ✕

### Protocol and Ports

Specify the protocols and ports to which this rule applies.

**Steps:**

- Rule Type
- Protocol and Ports
- Action
- Profile
- Name

Does this rule apply to TCP or UDP?

TCP

UDP

Does this rule apply to all local ports or specific local ports?

All local ports

Specific local ports:

Example: 80, 443, 5000-5010

**New Inbound Rule Wizard** ✕

**Action**

Specify the action to be taken when a connection matches the conditions specified in the rule.

**Steps:**

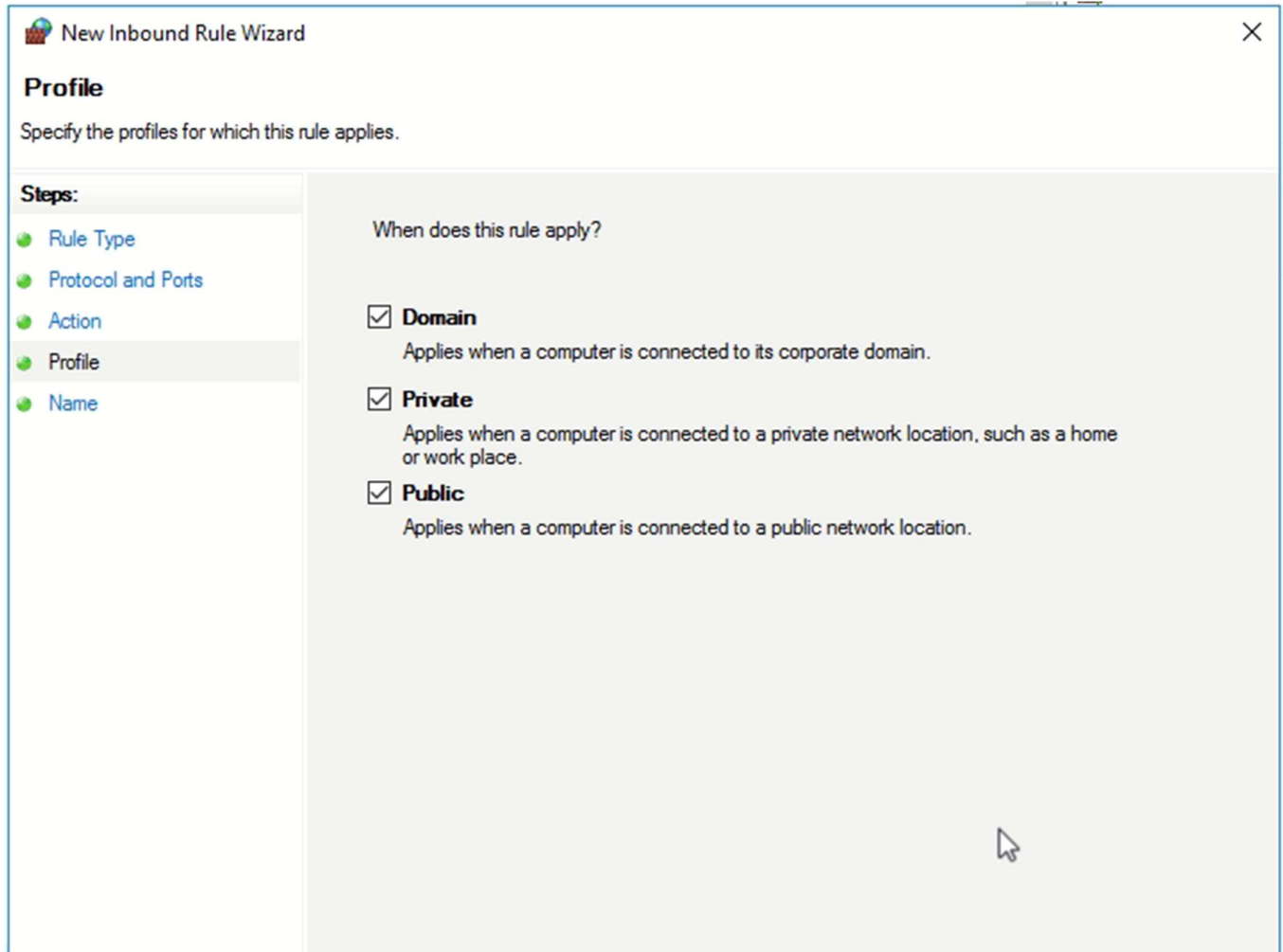
- Rule Type
- Protocol and Ports
- **Action**
- Profile
- Name


What action should be taken when a connection matches the specified conditions?

**Allow the connection**  
This includes connections that are protected with IPsec as well as those are not.

**Allow the connection if it is secure**  
This includes only connections that have been authenticated by using IPsec. Connections will be secured using the settings in IPsec properties and rules in the Connection Security Rule node.

**Block the connection**



 **New Inbound Rule Wizard** ✕

**Name**  
Specify the name and description of this rule.

**Steps:**

- Rule Type
- Protocol and Ports
- Action
- Profile
- Name

**Name:**

**Description (optional):**

